

**UPDATED:  
3/17/21**



**RUSD**

RIVERSIDE UNIFIED  
SCHOOL DISTRICT



**2020-2021**

## **IN-PERSON ATTENDANCE GUIDE**

*This is a fluid working document that may be adjusted as conditions and/or guidance changes.*

# PREFACE

---

Riverside Unified School District (RUSD) has developed plans that allow students to safely attend school and maximize their learning. This guidebook serves to provide Riverside Unified families with information related to in-person attendance at school facilities for the 2020-2021 school year. It takes into account the Governor's "Resilience Roadmap," the California Department of Public Health (CDPH) guidelines, and the most recent Riverside County health orders. The guidebook will continue to be updated based on any new information from the governing health agencies.



# STAY CONNECTED



OR VISIT:

RIVERSIDEUNIFIED.ORG

# A MESSAGE FROM OUR SUPERINTENDENT

March 1, 2021

Dear RUSD Families,

I am so excited to see our in-person program choice move into the hybrid schedules. The schools are ready for our students' return.

Our In-Person Attendance Guidebook has been developed to provide guidance to our community despite the conflicting data and constantly changing information we all face daily. Our principals and teachers will utilize the District-approved safety procedures, and our school community will be fully informed on how children will attend school in a safe, clean environment that provides equitable access to all curriculum and activities, and fosters emotional wellbeing.

In addition, students with unique learning needs, IEPs, 504s, and English learners will continue to receive differentiated supports, and the District as a whole will continue efforts to integrate more culturally relevant lessons across all subject matter and grade levels.

Now more than ever, we understand that communication and transparency are key. The Riverside Unified School District will communicate regularly with our families and staff as plans are appropriately revised to meet community health conditions and safety protocols. We always want our parents and guardians to have current information when making decisions for their children.

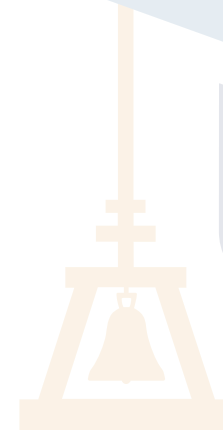
As this back-to-school transition takes place, please know that RUSD will comply with all State and County health regulations. We will be unwavering in our mission to keep our young people feeling safe, and welcome and engaged in their education. Thank you for your support and flexibility as we move forward with the next steps in reopening our schools for in-person attendance.

Sincerely,



**David C. Hansen, Ed.D.**  
**RUSD Superintendent**

A handwritten signature of David C. Hansen in black ink, written in a cursive style.



# TABLE OF CONTENTS

---

Guiding Principles	1
Health and Safety Precautions	2
COVID-19 Protocol and Notification	6
Considerations for Partial or Total School Closure	7
Employee and Student Testing	8
Program Overview	9
Meal Service	10
Transportation	11
Access to Additional Supports and Interventions	12
Special Education	14
Social Emotional Supports and Family Resources	15
Devices and Connectivity	17
Contact Information	18
2020-2021 School Calendars	19
Appendix	20
In-Person Schedules	
At-a-Glance Arrival and Dismissal	



# GUIDING PRINCIPLES



## HEALTH & SAFETY PRECAUTIONS

The health and safety of our students, staff, and families is of utmost importance. Our plan to reopen schools is based on guidance from public health officials and state agencies.



## EQUITY

Equity for RUSD is accomplished when access is based on need, and every student is provided with what they individually require to learn and succeed to fulfill their academic and social advancement.



## COMMUNICATION

We ensure that timely and accurate information is provided to students and families.



## SYSTEMIC PROTOCOLS

We strive to have structured processes to support the opening of schools.

# HEALTH AND SAFETY PRECAUTIONS

While important to address health and safety, we must also place focus on academic instruction and extracurricular programs to enhance student performance, encourage connectedness, and address learning recovery. When Phase 2 of in-person instruction begins in the Riverside Unified School District (RUSD), school will look much different than previous years. As students return, school will look different in these ways:

## CLASSROOM SETUP

- Each teacher will have a rolling plexiglass barrier in their classroom.
- All students will have a plexiglass desk partition.
  - Middle and high school students will wipe down their desk and shield at the start and end of each period.
- Desks will be arranged all facing forward to minimize face-to-face contact.
- Students will not share school or personal items and will be provided supplies such as books, pencils, scissors, and crayons.
- Hand sanitizing stations will be provided at various locations on campus.
- Hand sanitizer will be available in each classroom.
- Class sizes will be divided in half, as closely as possible, into A and B groups to limit the number of students on campus and in classrooms.
- Signage and floor markers for social distancing will be displayed and must be followed.
- Use of drinking fountains will be suspended except for the filling of water bottles.

## SCREENINGS

- Students and adults are required to self-screen on a daily basis for COVID-19 symptoms such as fever, cough, shortness of breath, muscle aches, headache, loss of taste or smell, congestion, sore throat, runny nose, nausea, or vomiting.
- Students and adults not feeling well or exhibiting symptoms that may be attributed to COVID-19 or a fever should stay home.
- Student temperatures will be checked upon arrival to campus. Anyone with a fever of 100.4 or higher will be sent home.



## ACCESS TO CAMPUS

- Visitors and volunteers on campus will be restricted. This will be revisited as the year progresses and as health circumstances change.
- School sites will have signage posted throughout campus to remind students and staff of healthy hygiene practices, social distancing, and face coverings.
- School sites will have designated routes for entry and exit, as well as a path of travel.
- Meetings with families and the public will be conducted by telephone or videoconference.

## FACE COVERINGS & PROTECTIVE EQUIPMENT

- All students and staff (including visitors and vendors) are required to use face coverings
  - At all times when on campus.
  - When on the bus.
  - Waiting to enter school and the office.
  - When on school and District property (except when temporarily removed when eating or drinking and must be immediately put back on).
  - When leaving school.
- Face coverings will be provided to all staff and students.
- Face shields will also be provided to staff with specific job specifications and some students with special needs in addition to face coverings.
- Students may bring personal face coverings or neck gaiters following the dress code policy.

In order to comply with the California Department of Public Health (CDPH) guidance, schools must exclude students from campus if they are not exempt from wearing a face covering under CDPH guidelines and refuse to wear one provided by the school. Schools will provide a face covering to students who inadvertently fail to bring a face covering to school to prevent unnecessary exclusions.



## FACE COVERING EXEMPTIONS:

- Persons with a medical condition, mental health condition, or disability that prevents wearing a face covering are exempt. This includes persons with a medical condition for whom wearing a face covering could obstruct breathing or are unconscious, incapacitated, or otherwise unable to remove a face covering without assistance.
- Persons who are hearing-impaired or communicating with a person who is hearing-impaired, where the ability to see the mouth is essential for communication, are exempt. Persons with communication disabilities or caregivers of those with communication disabilities will wear a clear mask or cloth mask with a clear panel.
- Persons for whom wearing a face covering would create a risk to the person related to their work, as determined by local, state, or federal regulators or workplace safety guidelines, are exempt.

## HYGIENE PRACTICES

### ***Follow Five Steps to Wash Your Hands the Right Way***

Washing your hands is easy, and it's one of the most effective ways to prevent the spread of germs. Clean hands can stop germs from spreading from one person to another and throughout an entire community—from your home and workplace to childcare facilities and hospitals.

***Follow these five steps every time.***



**1**

***Wet your hands with clean, running water (warm or cold), turn off the tap, and apply soap.***



**2**

***Lather your hands by rubbing them together with the soap. Lather the backs of your hands, between your fingers, and under your nails.***



**3**

***Scrub your hands for at least 20 seconds. Need a timer? Hum the “Happy Birthday” song from beginning to end twice.***



**4**

***Rinse your hands well under clean, running water.***



**5**

***Dry your hands using a clean towel or air dry them.***

## ON CAMPUS AND IN THE CLASSROOM

Social distancing will limit the spread of COVID-19. Schools will adhere to the following strategies to maintain social distancing:

- Movement of students and teachers or staff will be minimized.
- Elementary students will attend recess with their group of students, will avoid touching others and remain 6 feet of distance from one another.
- Secondary schools will follow a block schedule to minimize daily transitions.
- During in-person instruction, space between student chairs is 4 to 6 feet apart. All desks have plexiglass partitions and markings on classroom floors will be used to promote distancing.
- Social distancing will be used in locations where students assemble, including lunch and recess/stretch breaks.
- Grab N' Go Meals will be prepared in a pre-packaged style. Special dietary needs will be considered when planning food items where possible.
- Classrooms and offices will be cleaned daily.
- High-touch surfaces will be cleaned regularly.



# COVID-19 PROTOCOL AND NOTIFICATION

RUSD will follow the California Department of Public Health ([CDPH](#)) guidelines.

STUDENT OR STAFF WITH:	ACTION:
<b>1. COVID-19 symptoms (e.g. fever, cough, loss of taste or smell, difficulty breathing)</b>	<ul style="list-style-type: none"> <li>• Send home</li> <li>• Recommend testing (<i>if positive, see #3, if negative, see #4</i>)</li> <li>• School/classroom remains open</li> <li>• <b>No school community notification</b></li> </ul>
<b>2. Close contact with a confirmed COVID-19 case</b>	<ul style="list-style-type: none"> <li>• Send home</li> <li>• Quarantine for 14 days from last exposure</li> <li>• Recommend testing (<i>but will not shorten 14-day quarantine</i>)</li> <li>• School/classroom remains open</li> <li>• <b>Consider school community notification of a known contact</b></li> </ul>
<b>3. Confirmed COVID-19 case infection</b>	<ul style="list-style-type: none"> <li>• Notify Riverside County Public Health. Isolate the case and exclude from school for 10 days from symptom onset or test date. Identify contacts (†), quarantine and exclude exposed contacts (Likely entire stable group or cohort (††)) for 14 days after the last date the case was present at school while infectious</li> <li>• Recommend testing of contacts and prioritize symptomatic contacts (but will not shorten 14- day quarantine)</li> <li>• Disinfection and cleaning of classroom and primary spaces where case spent significant time</li> <li>• School remains open</li> <li>• <b>School community will be notified of a known case via letter/email from the district</b></li> </ul>
<b>4. Symptomatic person tests negative or a healthcare provider has provided documentation that the symptoms are typical of their underlying chronic condition.</b>	<ul style="list-style-type: none"> <li>• May return to school after symptoms resolve, if no fever without using fever reducing medication within 24 hours.</li> <li>• School/classroom remain open</li> <li>• <b>Consider school community notification if prior awareness</b></li> </ul>

(+)A contact is defined as a person who is within 6 feet from a case for more than 15 minutes cumulative within a 24-hour period, regardless of face coverings. In some school situations, it may be difficult to determine whether individuals have met this criterion and an entire stable group, classroom, or other group may need to be considered exposed, particularly if people have spent time together indoors.

(++) See Stable Group Guidance for definition of a stable group. In some situations, (e.g., when seating charts are used, face covering is well adhered to, and teachers or staff have observed students adequately throughout the day), contact tracing and investigation may be able to determine more precisely whether each stable group member has been exposed. In this situation, those who were not close contacts could continue with in-person instruction.



# CONSIDERATIONS FOR PARTIAL OR TOTAL SCHOOL CLOSURE

Once schools return to in-person instruction, schools are not required to close again if the County sees an increase in case rates or positive testing percentages. However, individual school closure is recommended based on the number of cases, the percentage of the teacher/students/staff that are positive for COVID-19, and following consultation with the local health department.

RUSD will follow County Public Health directives for closing campus and returning to distance learning if:

- Within a 14-day period, an outbreak has occurred in 25% or more stable groups in the school.
- Within a 14-day period, at least three outbreaks have occurred in the school AND more than 5% of the school population is infected.
- The County Public Health Officer may also determine school closure is warranted for other reasons, including results from public health investigation or other local epidemiological data.

The guidance states that a superintendent should close a school district if 25% or more of schools in the district have closed due to COVID-19 within 14 days, and in consultation with the local public health department.



# EMPLOYEE AND STUDENT TESTING

According to the California Department of Public Health (CDPH) and Riverside County Department of Public Health, once schools are reopened to in-person instruction, asymptomatic testing is recommended and can be implemented based on the local disease trends. The District will follow the testing guidance of CDPH and local health guidance.

**The District will follow the testing guidance of CDPH and local health guidance with support from the State of California for K-12 Schools.**

	Yellow	Orange	Red	Purple	CR>14*
Staff	Symptomatic and response testing	Symptomatic and response testing	Symptomatic and response testing + every 2 weeks asymptomatic testing	Symptomatic and response testing + every 2 weeks asymptomatic testing	Symptomatic and response testing + weekly asymptomatic (PCR or twice weekly antigen testing)**
Students K-12	Symptomatic and response testing	Symptomatic and response testing	Symptomatic and response testing + every 2 weeks asymptomatic testing	Symptomatic and response testing + every 2 weeks asymptomatic testing	Symptomatic and response testing + weekly asymptomatic (PCR or twice weekly antigen testing)**

TP= test positivity

\* The case rates above are adjusted case rates

\*\*Weekly asymptomatic testing assumes the use of a PCR test. If antigen testing is used, testing should be at a twice a week cadence.

Students or staff who have tested positive for active infection with SARS-CoV-2 virus within the last 90 days are exempt from asymptomatic testing.

Any school currently open is subject to the minimum testing requirements established by Cal/OSHA. These standards include response testing for exposed cases and outbreak testing for everyone weekly until no longer considered an outbreak. [Please refer to Cal/OSHA](#) guidance for complete details.

# PROGRAM OVERVIEW



## IN-PERSON PROGRAM PHASE 2 AND 3



RUSD is proud to offer program choices for our families. This guide is specific to in-person attendance during Phase 2 and 3 of the In-Person Hybrid Instructional Model.

**Phase 2:** During Phase 2, students will return to campus for in-person instruction one day per week. Students will be placed into groups that physically come to school on different days of the week in order to increase social distancing. Students placed in Group A will physically come to school on campus on Tuesdays and participate in distance learning on Monday, Wednesday, Thursday, and Friday. Students placed in Group B will physically come to school on campus on Thursdays and participate in distance learning on Mondays, Tuesdays, Wednesdays, and Fridays.

**Phase 3:** Students will physically come to school during regular school hours two days per week. Students in Group A will physically come to school on campus on Mondays and Tuesdays. Students in Group B will physically come to school on campus on Thursdays and Fridays. On the days students do not come to school on campus, they will participate in distance learning instruction during typical school hours.

**Preschool students** will return to in-person attendance during Phase 3.

Students enrolled in special education classes (including preschool and Project TEAM) will physically come to school following their assigned schedules during Phase 2 and 3.

# MEAL SERVICE

During the school year, Nutrition Services will continue to provide meals to all students in all programs. Families are encouraged to apply for the Meal Program using the RUSD Funding Form. To apply, please visit [riversideunified.org/departments/nutritionservices](https://riversideunified.org/departments/nutritionservices) or call Nutrition Services at (951)352-6740.

## Beginning March 8

Grab N' Go style lunch will be served and consumed on-site on in-person days.

All items are individually wrapped and packaged.

All meals are served at no cost, no matter the student's eligibility.

In addition, we will continue Drive Thru Meal Service.

**Meal Service Days: Monday, Wednesday and Friday**

**Meal Service Time: 11:15am-12:45pm**

Drive Thru Meal Service locations:		
High School	Middle School	Elementary School
Arlington	Central	Highgrove
King	Chemawa	Jackson
Lincoln	Earhart	Longfellow
North	Gage	Madison
Poly	Miller	Taft
Ramona	Sierra	
	University	

**CLICK HERE  
FOR MEAL  
SCHEDULES**



# TRANSPORTATION

Transportation services will continue to be offered for students during in-person attendance. If you have any questions regarding transportation, please contact the Department of Transportation at (951) 788-7135 ext. 83019.

- A daily cleaning regiment has been implemented in all busses to disinfect with a heightened awareness to frequently sanitize high-touch areas according to CDC guidelines.
- Only one bus will be in the loading/unloading zone at any one time.
- All students and the driver will be required to wear face coverings during the entire bus ride.
- To maximize social distancing, students will load the bus from the back to the front, sitting in seats with identified signage.
- Unloading will be from front to back to minimize students crossing paths and close contact with other students.
- Windows will be open as much as feasible to increase air circulation within the bus.

Students cannot be left unattended at a bus stop. All families **must** conduct a self-screening at home before the students walk to the bus stop. If the student is exhibiting symptoms or a fever of 100.4 or higher, they should stay home. All students will be transported to their school site. If a student is not feeling well, they will sit in an assigned area on the bus and the school administrator will be notified upon arrival at the school site. The student's family will be notified to pick the student up from the school site.



# ACCESS TO ADDITIONAL SUPPORTS AND INTERVENTIONS

## TUTORING

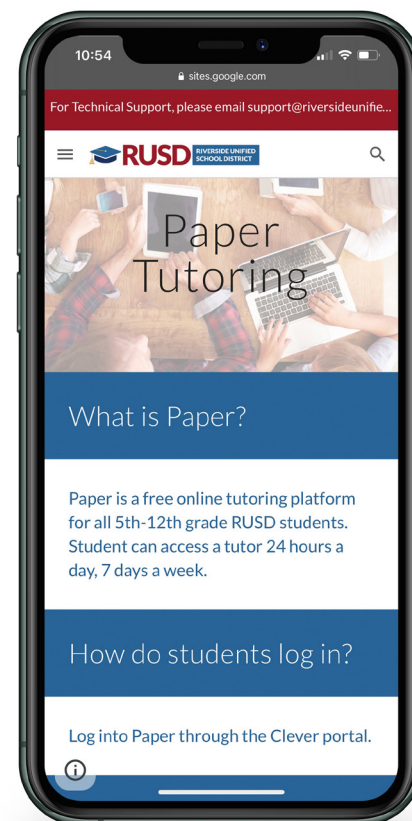
Paper Tutoring, a new tutoring service, will be available to all students Grades 5-12 for FREE. Paper allows students to receive live-tutoring, 24/7 and is available in any subject in both English and Spanish. Paper can also help with essay writing support by reviewing essays and providing feedback on how to improve grammar, content, and structure within 24 hours of submission. [Click here for information on how to login in.](#)



### FREE ONLINE TUTORING

- Starting October 19th
- Chat with tutors 24/7
- Unlimited Sessions
- Any academic subjects
- Essay review

[CLICK HERE FOR DETAILS](#)



# HEARTS AND PRIMETime

Virtual tutoring is available from RUSD's Expanded Learning staff through the HEARTS (grades TK-6) and PRIMETime (grades 7-8) program for in-person students attending the listed schools and virtual program students from the following home schools:

ELEMENTARY SCHOOLS		
Adams Elementary	Highgrove Elementary	Magnolia Elementary
Alcott Elementary	Highland Elementary	Monroe Elementary
Beatty Elementary	Jackson Elementary	Mt. View Elementary
Bryant Elementary	Jefferson Elementary	Pachappa Elementary
Emerson Elementary	Liberty Elementary	Victoria Elementary
Fremont Elementary	Longfellow Elementary	Washington Elementary
Hawthorne Elementary	Madison Elementary	

MIDDLE SCHOOLS		
Central Middle	Earhart Middle	Sierra Middle
Chemawa Middle	Gage Middle	University Heights Middle

Students may take part in live, drop-in class/homework support, small-group tutoring sessions, and academic enrichment activities between the hours of 3:00 pm and 6:00 pm Monday through Friday. Spanish-speaking tutors are available to support English Learners and the Dual Language Immersion Program. To register, use the provided link: [HEARTS-PRIMETime Registration Form](#) For more information, please contact Alexis Mueting, Expanded Learning Teacher on Special Assignment, at [amueting@riversideunified.org](mailto:amueting@riversideunified.org) or (951) 788-7135 ext. 56112.

## ***Tutoring for Dual Language Immersion students***

RUSD's Poly High School students are providing tutoring for elementary students in the Dual Language Immersion Program. Space is limited. Please contact your school site's principal if you are interested.

# SPECIAL EDUCATION

Special education, related services, and any other services required by a student's Individualized Education Plan (IEP) will be offered to the extent practicable.

IEP meetings will be convened virtually for students in all instructional programs. This means parents and other members of the IEP team will have an opportunity to participate through a platform such as Google Meets or by telephone.

Special Education evaluations will be conducted virtually or in-person following health and safety precautions and guidance issued by the State and local health authorities.

Students who receive pull-out services such as speech and language or RSP, or who mainstream into another classroom for a portion of their day, will remain in their classroom and participate in the session virtually using a platform such as Google Meet while wearing headphones with a microphone.

Specialized IEP related services provided by outside agencies, such as a private duty nurse, will continue to be provided following health and safety guidelines.



# SOCIAL EMOTIONAL SUPPORTS AND FAMILY RESOURCES

The District is committed to reengaging and reconnecting with students and supporting their social and emotional needs. A focus on social-emotional learning (SEL) is critical as students and staff adjust to hybrid learning and students encounter significant disruption to their personal and academic lives. SEL lessons will continue to be delivered by teachers and support staff.

Student Assistance Program (SAP) Counselors are assigned to every school throughout the District. SAP Counselors provide individual and group counseling, social skills development, and classroom lessons. For information related to SAP at each school, contact site administrators or Dr. Katarina Roy Schanz, Director of Wellness and Engagement, at [kroyschanz@riversideunified.org](mailto:kroyschanz@riversideunified.org) or (951) 352-1200 ext. 83302.

Please visit the [RUSD Virtual Wellness Center](#) to discover ways to enhance your overall well-being.

In addition, [Care Solace](#), a local partner organization, is a free service to Riverside Unified students, staff and their families. Care Solace can help you find mental health providers or programs in our community matched to your needs regardless of circumstances. Their team is available 24/7 and can support you in any language.

## **If you would like to use Care Solace to help you find a provider:**

- Call 888-515-0595 24/7
- Visit [Caresolace.com/rusdfamilies](https://caresolace.com/rusdfamilies) and either search on your own , OR click “Book Appointment” for assistance by video chat, email, or phone.
- Email [weserve@caresolace.org](mailto:weserve@caresolace.org) with the following information:
  - Your name and contact information (cell phone number)
  - Your preferred language
  - A good time for Care Solace to contact you



## FAMILY RESOURCE CENTER

The RUSD Family Resource Center's mission is to improve student learning and development, strengthen family practices, and leverage school programs by integrating resources and services from the community. Family Resource Center services promote student and family wellness and foster opportunities for family and community engagement through:

- Connections to district supports including health services, counseling, early childhood programs, homeless and foster services, dropout prevention, and adult education.
- Linkages to community resources and referrals for food, clothing, shelter, health services, childcare, crisis assistance, among other resources.
- Family webinars and virtual workshops that provide practical tools to support distance learning, student wellness, family engagement and leadership development.

To connect with the RUSD Family Resource Center, call (951) 328-4003 and leave a detailed message. Visit the RUSD [Family Resource Center](#) webpage and follow on [Facebook](#) to learn more.



# DEVICES AND CONNECTIVITY

Students may be asked to bring devices to and from school to facilitate individualized support. If your child is in need of a device or hotspot for internet connectivity, please call the RUSD Tech Support Hotline and someone will assist you. For the safety and security of our students, all devices (Chromebooks) checked out from RUSD are equipped with a content filter.

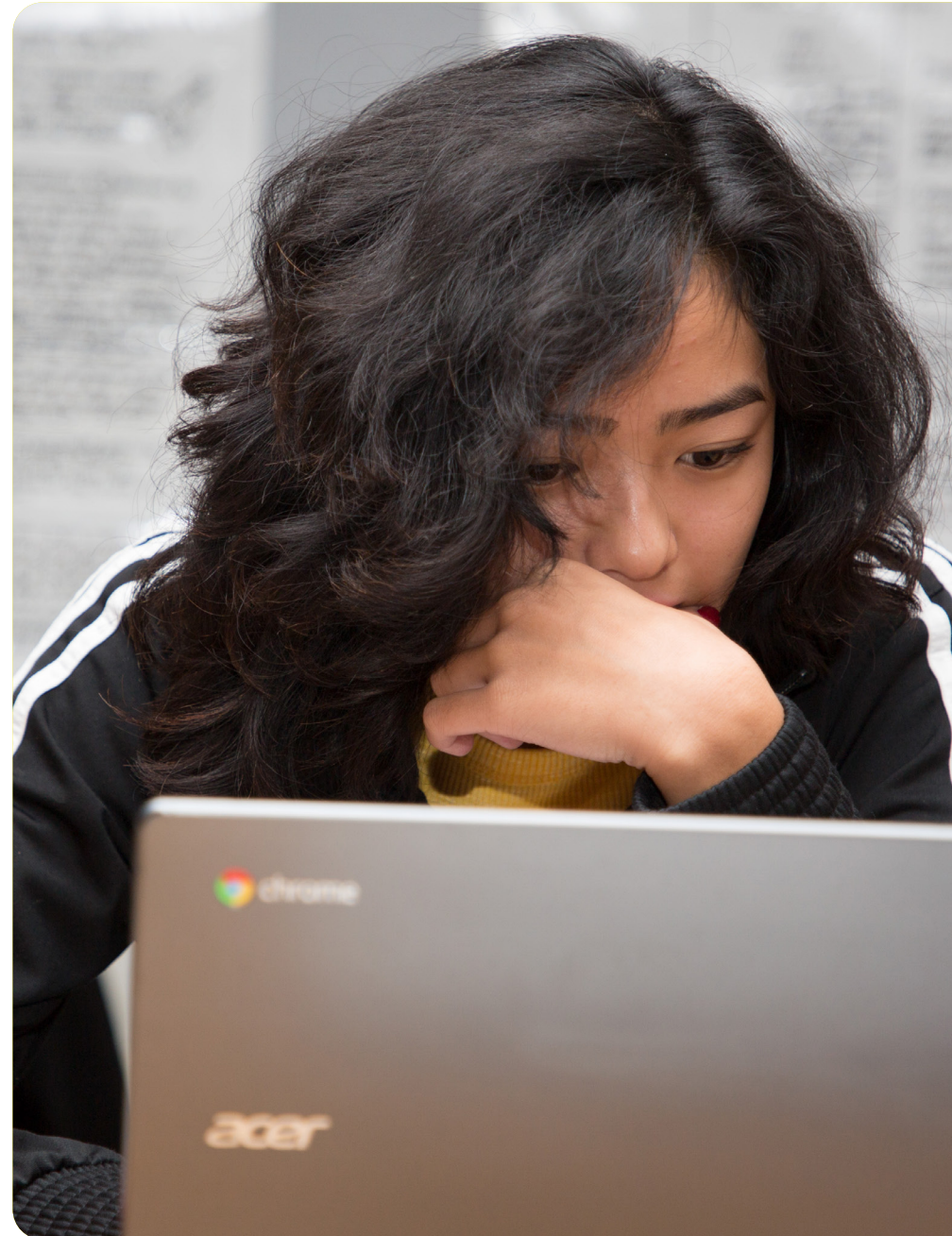
You may qualify for affordable internet if your student qualifies for the school meal program, also known as the National School Lunch Program. For information on internet providers, please visit [www.everyoneon.org/cetf](http://www.everyoneon.org/cetf).

If your child is in need of technical assistance, please use the following contact methods and someone will assist you as soon as possible.

RUSD Tech Support Hotline: (951) 208-7185

RUSD Tech Support Email: [support@riversideunified.org](mailto:support@riversideunified.org)

**CLICK HERE FOR  
TECH SUPPORT**





# CONTACT INFORMATION

PROGRAM	CONTACT PHONE NUMBER
Family Resource Center	(951) 328-4003
Home Based Program	(951) 276-7670
In-person Program	Contact your assigned school site office
Nutrition Services	(951) 352-6740
Special Education	(951) 352-1200 ext. 83503
Student Assistance Program	(951) 352-1200 ext. 83302
Tech Support	(951) 208-7185
Transportation	(951) 788-7135 ext. 83019
Virtual Program	Contact your assigned school site office

# 2020-2021 SCHOOL CALENDARS

## RIVERSIDE UNIFIED SCHOOL DISTRICT Standard School Calendar 2020-2021

**\*Due to COVID, 7th graders started school on August 10, 2020,  
therefore their last day of school will be May 26, 2021**

<b>JULY</b> S M T W T F S 1 2 3 4 5 6 7 8 9 10 11 12 13 14 15 16 17 18 19 20 21 22 23 24 25 26 27 28 29 30 31	<b>AUGUST</b> S M T W T F S 1 2 3 4 5 6 7 8 9 10 11 12 13 14 15 16 17 18 19 20 21 22 23 24 25 26 27 28 29 30 31	<b>SEPTEMBER</b> S M T W T F S 1 2 3 4 5 6 7 8 9 10 11 12 13 14 15 16 17 18 19 20 21 22 23 24 25 26 27 28 29 30	<b>OCTOBER</b> S M T W T F S 1 2 3 4 5 6 7 8 9 10 11 12 13 14 15 16 17 18 19 20 21 22 23 24 25 26 27 28 29 30 31
<b>NOVEMBER</b> S M T W T F S 1 2 3 4 5 6 7 8 9 10 11 12 13 14 15 16 17 18 19 20 21 22 23 24 25 26 27 28 29 30	<b>DECEMBER</b> S M T W T F S 1 2 3 4 5 6 7 8 9 10 11 12 13 14 15 16 17 18 19 20 21 22 23 24 25 26 27 28 29 30 31	<b>JANUARY</b> S M T W T F S 1 2 3 4 5 6 7 8 9 10 11 12 13 14 15 16 17 18 19 20 21 22 23 24 25 26 27 28 29 30 31	<b>FEBRUARY</b> S M T W T F S 1 2 3 4 5 6 7 8 9 10 11 12 13 14 15 16 17 18 19 20 21 22 23 24 25 26 27 28
<b>MARCH</b> S M T W T F S 1 2 3 4 5 6 7 8 9 10 11 12 13 14 15 16 17 18 19 20 21 22 23 24 25 26 27 28 29 30 31	<b>APRIL</b> S M T W T F S 1 2 3 4 5 6 7 8 9 10 11 12 13 14 15 16 17 18 19 20 21 22 23 24 25 26 27 28 29 30	<b>MAY</b> S M T W T F S 1 2 3 4 5 6 7 8 9 10 11 12 13 14 15 16 17 18 19 20 21 22 23 24 25 26 27 28 29 30 31	<b>JUNE</b> S M T W T F S 1 2 3 4 5 6 7 8 9 10 11 12 13 14 15 16 17 18 19 20 21 22 23 24 25 26 27 28 29 30

### LEGAL & LOCAL HOLIDAYS

<b>JUL</b> 3	- Independence Day Observed
<b>SEP</b> 7	- Labor Day
<b>NOV</b> 11	- Veterans' Day
26	- Thanksgiving Day
27	- All Facilities Closed
<b>DEC</b> 24	- All Facilities Closed
25	- Christmas Holiday Observed
31	- (In Lieu of Admissions Day)
<b>JAN</b> 1	- New Year's Holiday Observed
<b>JAN</b> 18	- Martin Luther King's Day
<b>FEB</b> 12	- Lincoln's Day
15	- Presidents' Day
<b>MAY</b> 31	- Memorial Day

**November 23 - 27 All Facilities Closed**  
**December 21 - 25 All Facilities Closed**

Board Approved 9/3/19  
\*Board Approved 12/17/19  
\*Holiday Noted: December 31

**\*Due to COVID, 7th graders started school on August 10, 2020,  
therefore their last day of school will be May 26, 2021**

### IMPORTANT DATES

<b>AUG</b> 5	- New Employee Welcome
<b>AUG</b> 6-7	- All Teachers on Duty
<b>AUG</b> 7*	- <b>First Day for 7th Grade</b>
<b>AUG</b> 10	- Classes Begin
<b>OCT</b> 9	- End of First MS/HS Quarter (MS Not in Session)
<b>OCT</b> 30	- Elementary Minimum Day
<b>NOV</b> 5-6	- Parent/Teacher Conferences (Elementary Not in Session)
<b>NOV</b> 6	- End of First Trimester (Elementary sites only)
<b>NOV</b> 23-27	- Thanksgiving Recess
<b>DEC</b> 18	- End of First MS/HS Semester (MS/HS Not in Session)
<b>DEC</b> 21 thru Jan 1	- Winter Recess
<b>JAN</b> 4	- Classes Resume
<b>FEB</b> 19	- Elementary Minimum Day
<b>FEB</b> 26	- End of Second Trimester (Elementary sites only)
<b>MAR</b> 12	- End of Third MS/HS Quarter (MS Not in Session)
<b>MAR</b> 22-26	- Spring Recess
<b>MAR</b> 29	- Classes Resume
<b>MAY</b> 14	- Elementary Minimum Day
<b>MAY</b> 25	- End of High School
<b>MAY</b> 26*	- <b>End of Elem, 7th &amp; 8th Grade</b>
<b>MAY</b> 26	- Last Day for Elem/MS/HS Teachers

## DISTRITO ESCOLAR UNIFICADO DE RIVERSIDE Calendario Escolar Convencional 2020-2021

**\*Debido a COVID, los alumnos de 7° grado comenzaron las clases el 10 de agosto de 2020, por lo tanto su último día de clases será el 26 de mayo de 2021**

<b>JULIO</b> D L M M J V S 1 2 3 4 5 6 7 8 9 10 11 12 13 14 15 16 17 18 19 20 21 22 23 24 25 26 27 28 29 30 31	<b>AGOSTO</b> D L M M J V S 1 2 3 4 5 6 7 8 9 10 11 12 13 14 15 16 17 18 19 20 21 22 23 24 25 26 27 28 29 30 31	<b>SEPTIEMBRE</b> D L M M J V S 1 2 3 4 5 6 7 8 9 10 11 12 13 14 15 16 17 18 19 20 21 22 23 24 25 26 27 28 29 30	<b>OCTUBRE</b> D L M M J V S 1 2 3 4 5 6 7 8 9 10 11 12 13 14 15 16 17 18 19 20 21 22 23 24 25 26 27 28 29 30 31
<b>NOVIEMBRE</b> D L M M J V S 1 2 3 4 5 6 7 8 9 10 11 12 13 14 15 16 17 18 19 20 21 22 23 24 25 26 27 28 29 30	<b>DICIEMBRE</b> D L M M J V S 1 2 3 4 5 6 7 8 9 10 11 12 13 14 15 16 17 18 19 20 21 22 23 24 25 26 27 28 29 30 31	<b>ENERO</b> D L M M J V S 1 2 3 4 5 6 7 8 9 10 11 12 13 14 15 16 17 18 19 20 21 22 23 24 25 26 27 28 29 30 31	<b>FEBRERO</b> D L M M J V S 1 2 3 4 5 6 7 8 9 10 11 12 13 14 15 16 17 18 19 20 21 22 23 24 25 26 27 28
<b>MARZO</b> D L M M J V S 1 2 3 4 5 6 7 8 9 10 11 12 13 14 15 16 17 18 19 20 21 22 23 24 25 26 27 28 29 30 31	<b>ABRIL</b> D L M M J V S 1 2 3 4 5 6 7 8 9 10 11 12 13 14 15 16 17 18 19 20 21 22 23 24 25 26 27 28 29 30	<b>MAYO</b> D L M M J V S 1 2 3 4 5 6 7 8 9 10 11 12 13 14 15 16 17 18 19 20 21 22 23 24 25 26 27 28 29 30 31	<b>JUNIO</b> D L M M J V S 1 2 3 4 5 6 7 8 9 10 11 12 13 14 15 16 17 18 19 20 21 22 23 24 25 26 27 28 29 30

### DÍAS FESTIVOS LEGALES Y LOCALES

<b>JUL</b> 3	- Día de la independencia
<b>SEP</b> 7	- Día del trabajo
<b>NOV</b> 11	- Día de los veteranos
26	- Día de acción de gracias
27	- Todas las instalaciones están cerradas
<b>DIC</b> 24	- Todas las instalaciones están cerradas
25	- Observación de las fiestas navideñas
31	- (En lugar del día de admisión)
<b>ENE</b> 1	- Observación de Año nuevo
18	- Día de Martin Luther King
<b>FEB</b> 12	- Día de Lincoln
15	- Día de los Presidentes
<b>MAY</b> 31	- Día de conmemoración de los caídos en batalla

**23 - 27 de noviembre todas las instalaciones están cerradas**  
**21 - 25 de diciembre todas las instalaciones están cerradas**

Aprobado por la junta de Educación el 3 de septiembre de 2019  
\* Aprobado por la junta de Educación el 17 de diciembre de 2019  
Día festivo indicado: 31 de diciembre  
El calendario también está disponible en inglés  
\* Debido a COVID, los alumnos de 7° grado comenzaron las  
clases el 10 de agosto de 2020, por lo tanto su último día de clases  
será el 26 de mayo de 2021

### FECHAS IMPORTANTES

<b>AGO</b> 5	- Bienvenida a los nuevos empleados
<b>AGO</b> 6-7	- Todos los maestros se reportan a trabajar
<b>AGO</b> 7*	- <b>Primer día de clases para el 7° grado</b>
<b>AGO</b> 10	- Inicio de clases
<b>OCT</b> 9	- Fin del primer cuatrimestre secundaria/preparatoria (No hay clases en la secundaria)
<b>OCT</b> 30	- Día de horario reducido en la primaria
<b>NOV</b> 5-6	- Conferencias de padres/maestros
	- No hay clases en la primaria
<b>NOV</b> 6	- Final del primer trimestre (solo escuelas primarias)
<b>NOV</b> 23-27	- Vacaciones por el Día de acción de gracias
<b>DIC</b> 18	- Fin del primer semestre secundaria/preparatoria (No hay clases en la secundaria y preparatoria)
<b>DIC</b> 21 thru Jan 1	- Vacaciones de invierno
<b>ENE</b> 4	- Reanudan las clases
<b>FEB</b> 19	- Día de horario reducido en la primaria
<b>FEB</b> 26	- Fin del segundo trimestre (solo escuelas primarias)
<b>MAR</b> 12	- Fin del tercer cuatrimestre secundaria/preparatoria
	- No hay clases en la secundaria
<b>MAR</b> 22-26	- Vacaciones de primavera
<b>MAR</b> 29	- Reanudan las clases
<b>MAY</b> 14	- Día de horario reducido en la primaria
<b>MAY</b> 25	- Fin de año para las preparatorias
<b>MAY</b> 26	- Fin de año para las primarias 7° y 8° grado
<b>MAY</b> 26	- Último día para maestros de primaria/secu/prepa

# APPENDIX

## PHASE 2 SCHEDULES

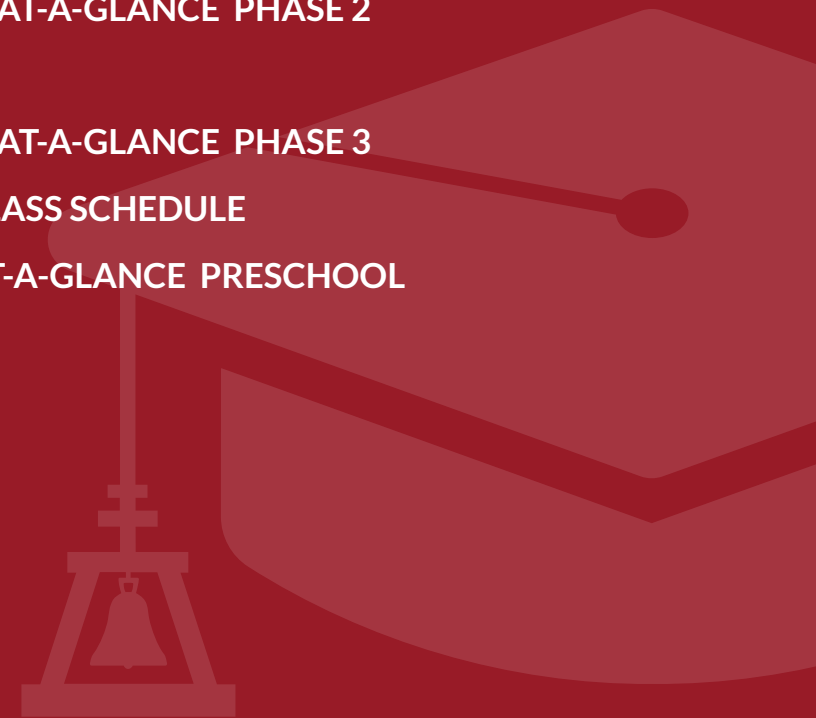
ARRIVAL AND DISMISSAL IN-PERSON ATTENDANCE AT-A-GLANCE PHASE 2

## PHASE 3 SCHEDULES

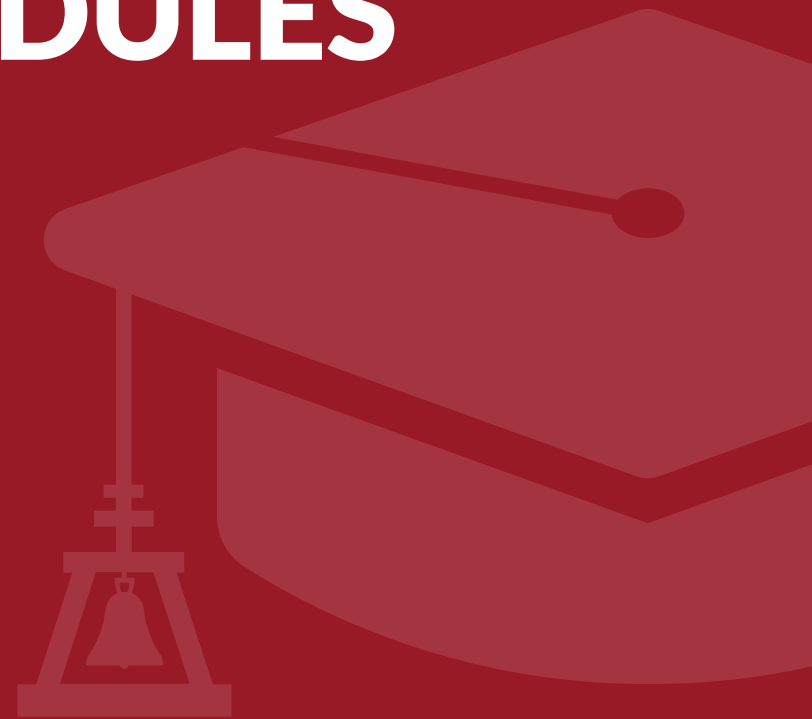
ARRIVAL AND DISMISSAL IN-PERSON ATTENDANCE AT-A-GLANCE PHASE 3

PHASE 2 AND 3 PRESCHOOL SPECIAL DAY CLASS SCHEDULE

ARRIVAL AND DISMISSAL IN-PERSON ATTENDANCE AT-A-GLANCE PRESCHOOL



# PHASE 2 SCHEDULES



Elementary Group A  
**Phase 2 - In-Person Attendance**

Monday	Tuesday	Wednesday	Thursday	Friday
Group A				
Distance Learning from Home 8:30 - 2:00	<b>In-Person attendance on school site</b> 8:50 - 2:15	Distance Learning from Home 8:00 - 1:30	Distance Learning from Home 8:00 - 2:15	Distance Learning from Home 8:30 - 2:00
<b>Optional</b> 8:00 - 8:30 Check in Teacher determined	Arrival and Screening 8:50 - 9:15	<b>Required</b> 8:00 - 8:30 Live Interaction	<b>Required</b> 8:00 - 8:40 Live Interaction	<b>Optional</b> 8:00 - 8:30 Check in Teacher determined
Instruction 8:30 - 2:00  Instructional schedules vary by grade - Schedules provided by classroom teacher	In class Instruction 9:15 - 2:15  Bell schedules for recess and lunch will vary by school and grade	Instruction 8:30 - 10:00  Instructional schedules vary by grade - Schedules provided by classroom teacher	Independent Activity 8:40 - 2:15	Instruction 8:30 - 2:00  Instructional schedules vary by grade - Schedules provided by classroom teacher
	Dismissal 2:15 - 2:30	Independent Activity 10:00 - 1:30		

Elementary Group B  
**Phase 2 - In-Person Attendance**

Monday	Tuesday	Wednesday	Thursday	Friday
Group B				
Distance Learning from Home 8:30 - 2:00	Distance Learning from Home 8:00 - 2:15	Distance Learning from Home 8:00 - 1:30	<b>In-Person attendance on school site</b> 8:50 - 2:15	Distance Learning from Home 8:30 - 2:00
<b>Optional</b> 8:00 - 8:30 Check in Teacher determined	<b>Required</b> 8:00 - 8:40 Live Interaction	<b>Required</b> 8:00 - 8:30 Live Interaction	Arrival and Screening 8:50 - 9:15	<b>Optional</b> 8:00 - 8:30 Check in Teacher determined
Instruction 8:30 - 2:00  Instructional schedules vary by grade - Schedules provided by classroom teacher	Independent Activity 8:40 - 2:15	Instruction 8:30 - 10:00  Instructional schedules vary by grade - Schedules provided by classroom teacher	In class Instruction 9:15 - 2:15  Bell schedules for recess and lunch will vary by school and grade	Instruction 8:30 - 2:00  Instructional schedules vary by grade - Schedules provided by classroom teacher
		Independent Activity 10:00 - 1:30	Dismissal 2:15 - 2:30	

Elementary (TK-6) Special Education  
**Mild/Moderate Special Day Class (SDC)**  
**Phase 2 - In-Person Attendance**

Monday	Tuesday	Wednesday	Thursday	Friday
All students attend together				
Distance Learning from Home 8:30 - 2:00	Distance Learning from Home 8:30 - 2:00	Distance Learning from Home 8:00 - 1:30	<b>In-Person attendance on school site</b> 8:50 - 2:15	<b>In-Person attendance on school site</b> 8:50 - 2:15
<b>Optional</b> 8:00 - 8:30 Check in Teacher determined	<b>Optional</b> 8:00 - 8:30 Check in Teacher determined	<b>Required</b> 8:00 - 8:30 Live Instruction	Arrival and Screening 8:50 - 9:15	Arrival and Screening 8:50 - 9:15
Instruction 8:30 - 1:30  Instructional schedules vary by grade - Schedules provided by classroom teacher	Instruction 8:30 - 2:00  Instructional schedules vary by grade - Schedules provided by classroom teacher	Instruction 8:30 - 10:00  Instructional schedules vary by grade - Schedules provided by classroom teacher	In class Instruction 9:15 - 2:15  Bell schedules for recess and lunch will vary by school and grade	In class Instruction 9:15 - 2:15  Bell schedules for recess and lunch will vary by school and grade
Parent/Student Consult time 1:30 - 2:00		Independent Activity 10:00 - 1:30	Dismissal  2:15 - 2:30	Dismissal  2:15 - 2:30



Elementary (TK-6) Special Education Special Day Class (SDC)  
**Special Day Class @ Harrison Elementary**  
**Phase 2 - In-Person Attendance**

Monday	Tuesday	Wednesday	Thursday	Friday
All students attend together				
<b>In-Person attendance on school site</b> 8:30 - 11:15	<b>In-Person attendance on school site</b> 8:30 - 11:15	Distance Learning from Home 8:30 - 1:30	<b>In-Person attendance on school site</b> 8:30 - 11:15	<b>In-Person attendance on school site</b> 8:30 - 11:15
Arrival and Screening 8:30 - 8:45	Arrival and Screening 8:30 - 8:45	<b>Optional</b> 8:00 - 8:30 Small Group	Arrival and Screening 8:30 - 8:45	Arrival and Screening 8:30 - 8:45
In class Instruction 8:45 - 11:15  15 minute recess  Schedules will vary by school and grade	In class Instruction 8:45 - 11:15  15 minute recess  Schedules will vary by school and grade	<b>Required</b> Daily Live Interaction 8:30 - 10:00  Schedules will vary by school and grade	In class Instruction 8:45 - 11:15  15 minute recess  Schedules will vary by school and grade	In class Instruction 8:45 - 11:15  15 minute recess  Schedules will vary by school and grade
Dismissal Get meals to go and load busses 11:15 - 11:30	Dismissal Get meals to go and load busses 11:15 - 11:30	Independent Activity 10:00 - 12:00	Dismissal Get meals to go and load busses 11:15 - 11:30	Dismissal Get meals to go and load busses 11:15 - 11:30
Students transported home Student lunch time 11:30 - 12:45	Students transported home Student lunch time 11:30 - 12:45	Suggest Student Lunch  12:00-12:30	Students transported home Student lunch time 11:30 - 12:45	Students transported home Student lunch time 11:30 - 12:45
Independent Activity 12:45 - 2:30	Independent Activity 12:45 - 2:30	Independent Activity 12:30 - 1:30	Independent Activity 12:45 - 2:30	Independent Activity 12:45 - 2:30

**Elementary (TK-6) Special Education**  
**Moderate / Severe Special Day Class**  
**Phase 2 - In-Person Attendance**

Monday	Tuesday	Wednesday	Thursday	Friday
All students attend together				
<b>In-Person attendance on school site</b> 8:30 - 11:15	<b>In-Person attendance on school site</b> 8:30 - 11:15	Distance Learning from Home 8:30 - 1:30	<b>In-Person attendance on school site</b> 8:30 - 11:15	<b>In-Person attendance on school site</b> 8:30 - 11:15
Arrival and Screening 8:30 - 8:45	Arrival and Screening 8:30 - 8:45	<b>Optional</b> 8:00 - 8:30 Small Group	Arrival and Screening 8:30 - 8:45	Arrival and Screening 8:30 - 8:45
In class Instruction 8:45 - 11:15  15 minute recess  Schedules will vary by school and grade	In class Instruction 8:45 - 11:15  15 minute recess  Schedules will vary by school and grade	<b>Required</b> Daily Live Interaction 8:30 - 10:00  Schedules will vary by school and grade	In class Instruction 8:45 - 11:15  15 minute recess  Schedules will vary by school and grade	In class Instruction 8:45 - 11:15  15 minute recess  Schedules will vary by school and grade
Dismissal Get meals to go and load busses 11:15 - 11:30	Dismissal Get meals to go and load busses 11:15 - 11:30	Independent Activity 10:00 - 12:00	Dismissal Get meals to go and load busses 11:15 - 11:30	Dismissal Get meals to go and load busses 11:15 - 11:30
Students transported home Student lunch time 11:30 - 12:45	Students transported home Student lunch time 11:30 - 12:45	Suggest Student Lunch  12:00-12:30	Students transported home Student lunch time 11:30 - 12:45	Students transported home Student lunch time 11:30 - 12:45
Independent Activity 12:45 - 2:30	Independent Activity 12:45 - 2:30	Independent Activity 12:30 - 1:30	Independent Activity 12:45 - 2:30	Independent Activity 12:45 - 2:30

Middle School (7-8) Special Education  
**Moderate / Severe Special Day Class**  
**Phase 2 - In-Person Attendance**

Monday	Tuesday	Wednesday	Thursday	Friday
<b>In-Person attendance on school site</b> 8:55 - 2:05	<b>In-Person attendance on school site</b> 8:55 - 2:05	Distance Learning from Home 8:00 - 2:30	Distance Learning from Home 8:00 - 2:50	Distance Learning from Home 8:00 - 2:50
Arrival and Screening 8:55 - 9:10	Arrival and Screening 8:55 - 9:10	<b>Required</b> Live Interaction 8:00 - 11:00	<b>Required</b> Live Interaction 8:00 - 8:50	<b>Required</b> Live Interaction 8:00 - 8:50
In class Instruction 9:10 - 2:05  Bell schedules for recess and lunch will vary by school and grade	In class Instruction 9:10 - 2:05  Bell schedules for recess and lunch will vary by school and grade		Instruction 9:00 - 12:10  Live instruction and independent student activities vary by class. See teacher for specific schedule	Instruction 9:00 - 12:10  Live instruction and independent student activities vary by class. See teacher for specific schedule
Dismissal 2:05 - 2:25	Dismissal 2:05 - 2:25	Independent Work 11:00 - 2:30	Lunch 12:10 - 12:55	Lunch 12:10 - 12:55
			Live Interaction 12:55 - 1:45	Live Interaction 12:55 - 1:45
			Independent or Live 1:55 - 2:50	Independent or Live 1:55 - 2:50

High School (9-12) Special Education  
**Moderate / Severe Special Day Class**  
**Phase 2 - In-Person Attendance**

Monday	Tuesday	Wednesday	Thursday	Friday
<b>In-Person attendance on school site</b> 8:55 - 2:20	<b>In-Person attendance on school site</b> 8:55 - 2:20	Distance Learning from Home 8:00 - 2:30	Distance Learning from Home 8:00 - 2:50	Distance Learning from Home 8:00 - 2:50
Arrival and Screening 8:55 - 9:10	Arrival and Screening 8:55 - 9:10	<b>Required</b> 8:00 - 11:00 Live Interaction	<b>Required</b> 8:00 - 8:50 Live Interaction	<b>Required</b> 8:00 - 8:50 Live Interaction
In class Instruction 9:10 - 2:20	In class Instruction 9:10 - 2:20		Instruction 8:50 - 12:05	Instruction 8:50 - 12:05
Bell schedules for recess and lunch will vary by school and grade	Bell schedules for recess and lunch will vary by school and grade		Live instruction and independent student activities vary by class.	Live instruction and independent student activities vary by class.
		Independent Work 11:00 - 12:00	Lunch 12:05 - 12:50	Lunch 12:05 - 12:50
Dismissal 2:20 - 2:40	Dismissal 2:20 - 2:40	Lunch 12:00 - 12:35	Live Interaction 12:50 - 1:40	Live Interaction 12:50 - 1:40
		Independent Work 12:35 - 2:30	Independent or Live 1:40 - 2:50	Independent or Live 1:40 - 2:50

# **ARRIVAL AND DISMISSAL IN-PERSON ATTENDANCE AT-A-GLANCE PHASE 2**



**Arrival and Dismissal In-Person Attendance At-a-Glance**  
**Elementary Schools**  
**Phase 2- In-Person Attendance**

Monday	Tuesday	Wednesday	Thursday	Friday
<b>Elementary Group A</b>				
Distance Learning	<b>In-Person</b> Arrival 8:50 - 9:15  Dismissal 2:15 - 2:30	Distance Learning	Distance Learning	Distance Learning

Monday	Tuesday	Wednesday	Thursday	Friday
<b>Elementary Group B</b>				
Distance Learning	Distance Learning	Distance Learning	<b>In-Person</b> Arrival 8:50 - 9:15  Dismissal 2:15 - 2:30	Distance Learning

## Arrival and Dismissal In-Person Attendance At-a-Glance

Mild/Moderate Special Education Special Day Class (SDC)

**Phase 2 - In-Person Attendance**

Monday	Tuesday	Wednesday	Thursday	Friday
<b>Elementary (TK-6) Special Education Special Day Class (SDC)</b> <b>Mild/Moderate Special Day Class</b>				
Distance Learning	Distance Learning	Distance Learning	<b>In-Person</b>  Arrival 8:50 - 9:15  Dismissal 2:15 - 2:30	<b>In-Person</b>  Arrival 8:50 - 9:15  Dismissal 2:15 - 2:30
<b>Harrison Elementary Special Day Class</b>				
<b>In-Person</b>  Arrival 8:30 - 8:45  Dismissal 11:15 11:30	<b>In-Person</b>  Arrival 8:30 - 8:45  Dismissal 11:15 11:30	Distance Learning	<b>In-Person</b>  Arrival 8:30 - 8:45  Dismissal 11:15 11:30	<b>In-Person</b>  Arrival 8:30 - 8:45  Dismissal 11:15 11:30



## Arrival and Dismissal In-Person Attendance At-a-Glance

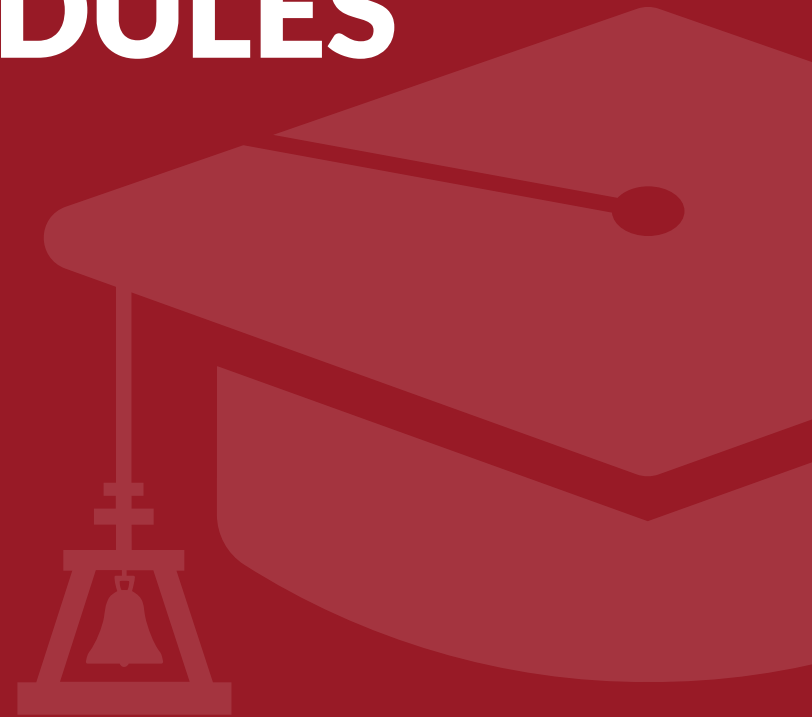
Special Education Special Day Class (SDC)

**Moderate Severe Special Day Class**

**Phase 2 - In-Person Attendance**

Monday	Tuesday	Wednesday	Thursday	Friday
<b>Elementary (TK-6) Special Education Special Day Class (SDC)</b> <b>Moderate Severe Special Day Class</b>				
<b>In-Person</b> Arrival 8:30 - 8:45  Dismissal 11:15 - 11:30	<b>In-Person</b> Arrival 8:30 - 8:45  Dismissal 11:15 - 11:30	Distance Learning	<b>In-Person</b> Arrival 8:30 - 8:45  Dismissal 11:15 - 11:30	<b>In-Person</b> Arrival 8:30 - 8:45  Dismissal 11:15 - 11:30
<b>Middle School (7-8) Special Education Special Day Class (SDC)</b> <b>Moderate Severe Special Day Class</b>				
<b>In-Person</b> Arrival 8:55 - 9:10  Dismissal 2:05 - 2:25	<b>In-Person</b> Arrival 8:30 - 8:45  Dismissal 2:05 - 2:25	Distance Learning	Distance Learning	Distance Learning
<b>High School (9-12) Special Education Special Day Class (SDC)</b> <b>Moderate Severe Special Day Class</b>				
<b>In-Person</b> Arrival 8:55 - 9:10  Dismissal 2:20 - 2:40	<b>In-Person</b> Arrival 8:55 - 9:10  Dismissal 2:20 - 2:40	Distance Learning	Distance Learning	Distance Learning

# PHASE 3 SCHEDULES



## Preschool Students

### Phase 3 - In-Person Attendance

If you have any questions, please contact Tricia Tran, Early Childhood Program Coordinator, at 951-352-8290 extension 65301 or by email at [ptran@riversideunified.org](mailto:ptran@riversideunified.org).

EARLY CHILDHOOD IN-PERSON PHASE 3				
MONDAY	TUESDAY	WEDNESDAY	THURSDAY	FRIDAY
<b>In-person AM 3 hours</b>	Virtual AM	Non-Instructional Day	Virtual AM	Virtual AM
Virtual PM	Virtual PM	Non-Instructional Day	<b>In-person PM 3 hours</b>	Virtual PM

Class times will vary depending on the school site and program.

HEAD START		
Sites	AM Class Time	PM Class Time
Fremont	7:30 - 11:00	11:45 - 3:15
Highgrove	7:30 - 11:00	11:45 - 3:15
Jackson	7:30 - 11:00	11:45 - 3:15
Jefferson	7:30 - 11:00	11:45 - 3:15
Longfellow	7:30 - 11:00	11:45 - 3:15
Madison	8:15-11:15	12:00-3:00

STATE PRESCHOOL		
Sites	AM Class Time	PM Class Time
Adams	8:00 - 11:00	11:45 - 2:45
Beatty	8:00 - 11:00	11:45 - 2:45
Emerson	7:45 - 10:45	11:45 - 2:45
EOC	7:45 - 10:45	11:30 - 2:30
Harrison	7:30 - 10:30	11:15 - 2:15
Hawthorne	8:00 - 11:00	11:45 - 2:45
Highland	7:45 - 10:45	11:15 - 2:15
Jefferson	7:45 - 10:45	11:30 - 2:30
Liberty	8:00 - 11:00	11:45 - 2:45
Longfellow	8:00 - 11:00	11:45 - 2:45
Magnolia	7:30 - 10:30	11:15 - 2:15
Monroe	8:00 - 11:00	11:45 - 2:45
Mt. View	8:00 - 11:00	12:00 - 3:00
Pachappa	7:45 - 10:45	11:30 - 2:30
Sunshine	8:00 - 11:00	11:45 - 2:45

Elementary Group A  
**Phase 3 - In-Person Attendance**

Monday	Tuesday	Wednesday	Thursday	Friday
Group A				
<b>In-Person attendance on school site</b> 8:50 - 2:15	<b>In-Person attendance on school site</b> 8:50 - 2:15	Distance Learning from Home 8:00 - 1:30	Distance Learning from Home 8:00 - 2:15	Distance Learning from Home 8:00 - 2:15
Arrival and Screening 8:50 - 9:15	Arrival and Screening 8:50 - 9:15	<b>Required</b> 8:00 - 8:30 Live Interaction	<b>Required</b> 8:00 - 8:40 Live Interaction	<b>Required</b> 8:00 - 8:40 Live Interaction
In class Instruction 9:15 - 2:15  Bell schedules for recess and lunch will vary by school and grade	In class Instruction 9:15 - 2:15  Bell schedules for recess and lunch will vary by school and grade	Instruction 8:30 - 10:00  Instructional schedules vary by grade - Schedules provided by classroom teacher	Independent Activity 8:40-11:45	Independent Activity 8:40-11:45
Dismissal 2:15 - 2:30	Dismissal 2:15 - 2:30	Independent Activity 10:00 - 1:30	Suggested Student Lunch 11:45-12:45	Suggested Student Lunch 11:45-12:45
			Independent Activity 12:45 - 2:15	Independent Activity 12:45 - 2:15

Elementary Group B  
**Phase 3 - In-Person Attendance**

Monday	Tuesday	Wednesday	Thursday	Friday
Group B				
Distance Learning from Home 8:00 - 2:15	Distance Learning from Home 8:00 - 2:15	Distance Learning from Home 8:00 - 1:30	<b>In-Person attendance on school site</b> 8:50 - 2:15	<b>In-Person attendance on school site</b> 8:50 - 2:15
<b>Required</b> 8:00 - 8:40 Live Interaction	<b>Required</b> 8:00 - 8:40 Live Interaction	<b>Required</b> 8:00 - 8:30 Live Interaction	Arrival and Screening 8:50 - 9:15	Arrival and Screening 8:50 - 9:15
Independent Activity 8:40-11:45	Independent Activity 8:40-11:45	Instruction 8:30 - 10:00  Instructional schedules vary by grade - Schedules provided by classroom teacher	In class Instruction 9:15 - 2:15  Bell schedules for recess and lunch will vary by school and grade	In class Instruction 9:15 - 2:15  Bell schedules for recess and lunch will vary by school and grade
Suggested Student Lunch 11:45-12:45	Suggested Student Lunch 11:45-12:45	Independent Activity 10:00 - 1:30	Dismissal 2:15 - 2:30	Dismissal 2:15 - 2:30
Independent Activity 12:45 - 2:15	Independent Activity 12:45 - 2:15			

Elementary (TK-6) Special Education  
**Mild/Moderate Special Day Class**  
**Phase 3 - In-Person Attendance**

Monday	Tuesday	Wednesday	Thursday	Friday
All students attend together				
<b>In-Person attendance on school site</b> 8:50 - 2:15	<b>In-Person attendance on school site</b> 8:50 - 2:15	Distance Learning from Home 8:00 - 1:30	<b>In-Person attendance on school site</b> 8:50 - 2:15	<b>In-Person attendance on school site</b> 8:50 - 2:15
Arrival and Screening 8:50 - 9:15	Arrival and Screening 8:50 - 9:15	<b>Required</b> 8:00 - 8:30 Live Instruction	Arrival and Screening 8:50 - 9:15	Arrival and Screening 8:50 - 9:15
In class Instruction 9:15 - 2:15  Bell schedules for recess and lunch will vary by school and grade	In class Instruction 9:15 - 2:15  Bell schedules for recess and lunch will vary by school and grade	Instruction 8:30 - 10:00  Instructional schedules vary by grade - Schedules provided by classroom teacher	In class Instruction 9:15 - 2:15  Bell schedules for recess and lunch will vary by school and grade	In class Instruction 9:15 - 2:15  Bell schedules for recess and lunch will vary by school and grade
Dismissal 2:15 - 2:30	Dismissal 2:15 - 2:30	Independent Activity 10:00 - 1:30	Dismissal 2:15 - 2:30	Dismissal 2:15 - 2:30

Elementary (TK-6) Special Education Special Day Class (SDC)  
**Harrison Elementary Special Day Class**  
**Phase 3 - In-Person Attendance**

Monday	Tuesday	Wednesday	Thursday	Friday
All students attend together				
<b>In-Person attendance on school site</b> 8:30 - 2:00	<b>In-Person attendance on school site</b> 8:30 - 2:00	Distance Learning from Home 8:30 - 1:30	<b>In-Person attendance on school site</b> 8:30 - 2:00	<b>In-Person attendance on school site</b> 8:30 - 2:00
Arrival and Screening 8:30 - 8:45	Arrival and Screening 8:30 - 8:45	<b>Optional</b> 8:00 - 8:30 Small Group	Arrival and Screening 8:30 - 8:45	Arrival and Screening 8:30 - 8:45
In class Instruction 8:45 - 2:00	In class Instruction 8:45 - 2:00	<b>Required</b> Live Interaction 8:30 - 10:00	In class Instruction 8:45 - 2:00	In class Instruction 8:45 - 2:00
Instructional schedules vary by grade - Schedules provided by classroom teacher	Instructional schedules vary by grade - Schedules provided by classroom teacher	Instructional schedules vary by grade - Schedules provided by classroom teacher	Instructional schedules vary by grade - Schedules provided by classroom teacher	Instructional schedules vary by grade - Schedules provided by classroom teacher
Bell schedules for recess and lunch will vary by school and grade	Bell schedules for recess and lunch will vary by school and grade	Independent Activity 10:00-12:00	Bell schedules for recess and lunch will vary by school and grade	Bell schedules for recess and lunch will vary by school and grade
		Suggested Student Lunch 12:00-12:30		
Dismissal Get meals to go and load busses 2:00 - 2:15	Dismissal Get meals to go and load busses 2:00 - 2:15	Independent Activity 12:30 - 1:30	Dismissal Get meals to go and load busses 2:00 - 2:15	Dismissal Get meals to go and load busses 2:00 - 2:15



Elementary (TK-6) Special Education  
**Moderate / Severe Special Day Class**  
**Phase 3 - In-Person Attendance**

Monday	Tuesday	Wednesday	Thursday	Friday
All students attend together				
<b>In-Person attendance on school site</b> 8:30 - 2:00	<b>In-Person attendance on school site</b> 8:30 - 2:00	Distance Learning from Home 8:30 - 1:30	<b>In-Person attendance on school site</b> 8:30 - 2:00	<b>In-Person attendance on school site</b> 8:30 - 2:00
Arrival and Screening 8:30 - 8:45	Arrival and Screening 8:30 - 8:45	<b>Optional</b> 8:00 - 8:30 Small Group	Arrival and Screening 8:30 - 8:45	Arrival and Screening 8:30 - 8:45
In class Instruction 8:45 - 2:00	In class Instruction 8:45 - 2:00	<b>Required</b> 8:30 - 10:00 Live Interaction	In class Instruction 8:45 - 2:00	In class Instruction 8:45 - 2:00
Instructional schedules vary by grade - Schedules provided by classroom teacher	Instructional schedules vary by grade - Schedules provided by classroom teacher	Schedules will vary by school and grade	Instructional schedules vary by grade - Schedules provided by classroom teacher	Instructional schedules vary by grade - Schedules provided by classroom teacher
		Independent Work 10:00 - 12:00		
		Suggested Student Lunch 12:00-12:30		
Bell schedules for recess and lunch will vary by school and grade	Bell schedules for recess and lunch will vary by school and grade		Bell schedules for recess and lunch will vary by school and grade	Bell schedules for recess and lunch will vary by school and grade
Dismissal Get meals to go and load busses 2:00 - 2:15	Dismissal Get meals to go and load busses 2:00 - 2:15	Independent Work 12:30 - 1:30	Dismissal Get meals to go and load busses 2:00 - 2:15	Dismissal Get meals to go and load busses 2:00 - 2:15

Middle School Group A  
**Phase 3 - In-Person Attendance**

Monday	Tuesday	Wednesday	Thursday	Friday
Group A				
<b>In-Person attendance on school site</b> 9:10 - 2:05  Periods 1, 3, 5	<b>In-Person attendance on school site</b> 9:10 - 2:05  Periods 2, 4, 6	Distance Learning from Home 8:00 - 2:30	Distance Learning from Home 7:45 - 2:30	Distance Learning from Home 7:45 - 2:30
Arrival and Screening 9:10 - 9:40	Arrival and Screening 9:10 - 9:40	<b>Required</b> 8:00 - 11:00 Live Interaction	<b>Required</b> 7:45 - 8:55 Live Interaction	<b>Required</b> 7:45 - 8:55 Live Interaction
In class Instruction 9:40 - 2:05  Bell schedules will vary by school and grade	In class Instruction 9:40 - 2:05  Bell schedules will vary by school and grade		Independent work 8:55 -12:10	Independent work 8:55 -12:10
Lunch 12:10 - 12:45	Lunch 12:10 - 12:45			
Dismissal 2:05 - 2:25	Dismissal 2:05 - 2:25	Lunch 12:00 - 12:35	Lunch 12:10 - 12:45	Lunch 12:10 - 12:45
Independent work 2:40 - 3:30	Independent work 2:40 - 3:30	Independent Work 12:35 - 2:30	Independent Work 12:55 - 2:30	Independent Work 12:55 - 2:30

Middle School Group B  
**Phase 3 - In-Person Attendance**

Monday	Tuesday	Wednesday	Thursday	Friday
Group B				
Distance Learning from Home 7:45 - 2:30	Distance Learning from Home 7:45 - 2:30	Distance Learning from Home 8:00 - 2:30	<b>In-Person attendance on school site</b> 9:10 - 2:05  Periods 1, 3, 5	<b>In-Person attendance on school site</b> 9:10 - 2:05  Periods 2, 4, 6
<b>Required</b> Live Interaction 7:45 - 8:55	<b>Required</b> Live Interaction 7:45 - 8:55	<b>Required</b> Live Interaction 8:00 - 11:00	Arrival and Screening 9:10 - 9:40	Arrival and Screening 9:10 - 9:40
Independent work 8:55 -12:10	Independent work 8:55 -12:10		In class Instruction 9:40 - 2:05  Bell schedules will vary by school and grade	In class Instruction 9:40 - 2:05  Bell schedules will vary by school and grade
			Lunch 12:10 - 12:45	Lunch 12:10 - 12:45
Lunch 12:10 - 12:45	Lunch 12:10 - 12:45	Lunch 12:00 - 12:35	Dismissal 2:05 - 2:25	Dismissal 2:05 - 2:25
Independent Work 12:55 - 2:30	Independent Work 12:55 - 2:30	Independent Work 12:35 - 2:30	Independent work 2:40 - 3:30	Independent work 2:40 - 3:30

Middle School (7-8) Special Education Special Day Class (SDC)  
**Moderate / Severe Special Day Class**  
**Phase 3 - In-Person Attendance**

Monday	Tuesday	Wednesday	Thursday	Friday
All students attend together				
<b>In-Person attendance on school site</b> 8:55 - 2:05	<b>In-Person attendance on school site</b> 8:55 - 2:05	Distance Learning from Home 8:00 - 2:30	<b>In-Person attendance on school site</b> 8:55 - 2:05	<b>In-Person attendance on school site</b> 8:55 - 2:05
Arrival and Screening 8:55 - 9:10	Arrival and Screening 8:55 - 9:10	<b>Required</b> 8:00 - 11:00 Live Interaction	Arrival and Screening 8:55 - 9:10	Arrival and Screening 8:55 - 9:10
In class Instruction 9:10 - 2:05	In class Instruction 9:10 - 2:05		In class Instruction 9:10 - 2:05	In class Instruction 9:10 - 2:05
Instructional schedules vary by grade - Schedules provided by classroom teacher	Instructional schedules vary by grade - Schedules provided by classroom teacher		Instructional schedules vary by grade - Schedules provided by classroom teacher	Instructional schedules vary by grade - Schedules provided by classroom teacher
Bell schedules for lunch will vary by school and grade	Bell schedules for lunch will vary by school and grade	Independent Work 11:00-12:00	Bell schedules for lunch will vary by school and grade	Bell schedules for lunch will vary by school and grade
		Suggested Student Lunch 12:00-12:35		
Dismissal Get meals to go and load busses 2:05 - 2:25	Dismissal Get meals to go and load busses 2:05 - 2:25	Independent Work 12:35 - 2:30	Dismissal Get meals to go and load busses 2:05 - 2:25	Dismissal Get meals to go and load busses 2:05 - 2:25

High School Group A  
**Phase 3 - In-Person Attendance**

Monday	Tuesday	Wednesday	Thursday	Friday
Group A				
<b>In-Person attendance on school site</b> 8:55 - 2:20 Periods 1, 3, 5	<b>In-Person attendance on school site</b> 8:55 - 2:20 Periods 2, 4, 6	Distance Learning from Home 8:00 - 2:30	Distance Learning from Home 7:45 - 2:30	Distance Learning from Home 7:45 - 2:30
Independent Work 7:45 - 8:45	Independent Work 7:45 - 8:45	<b>Required</b> 8:00-11:00 Live Interaction	<b>Required</b> 7:45-8:55 Live Interaction	<b>Required</b> 7:45-8:55 Live Interaction
Arrival and Screening 8:55 - 9:25	Arrival and Screening 8:55 - 9:25			
In class Instruction 9:25 - 2:20  Bell schedules for passing periods and lunch will vary by school and grade	In class Instruction 9:25 - 2:20  Bell schedules for passing periods and lunch will vary by school and grade		Independent Work 8:55 - 12:15	Independent Work 8:55 - 12:15
Lunch 12:15 - 12:50	Lunch 12:15 - 12:50	Independent Work 11:00 - 12:00		
Dismissal 2:20 - 2:40	Dismissal 2:20 - 2:40	Lunch 12:00 - 12:35	Lunch 12:15 - 12:50	Lunch 12:15 - 12:50
Independent work 2:40 - 3:30	Independent work 2:40 - 3:30	Independent Work 12:35 - 2:30	Independent Work 12:50 - 2:30	Independent Work 12:50 - 2:30

High School Group B  
**Phase 3** - In-Person Attendance

Monday	Tuesday	Wednesday	Thursday	Friday
Group B				
Distance Learning from Home 7:45 - 2:30	Distance Learning from Home 7:45 - 2:30	Distance Learning from Home 8:00 - 2:30	<b>In-Person attendance on school site</b> 8:55 - 2:20 Periods 1, 3, 5	<b>In-Person attendance on school site</b> 8:55 - 2:20 Periods 2, 4, 6
			Independent Work 7:45 - 8:45	Independent Work 7:45 - 8:45
<b>Required</b> 7:45 - 8:55 Live Interaction	<b>Required</b> 7:45 - 8:55 Live Interaction	<b>Required</b> 8:00 - 11:00 Live Interaction	Arrival and Screening 8:55 - 9:25	Arrival and Screening 8:55 - 9:25
Independent Work 8:55 - 12:15	Independent Work 8:55 - 12:15		In class Instruction 9:25 - 2:20  Bell schedules for passing periods and lunch will vary by school and grade	In class Instruction 9:25 - 2:20  Bell schedules for passing periods and lunch will vary by school and grade
			Independent Work 11:00 - 12:00	Lunch 12:15 - 12:50
Lunch 12:15 - 12:50	Lunch 12:15 - 12:50	Lunch 12:00 - 12:35	Dismissal 2:20 - 2:40	Dismissal 2:20 -2:40
Independent Work 12:50 - 2:30	Independent Work 12:50 - 2:30	Independent Work 12:35 - 2:30	Independent work 2:40 - 3:30	Independent work 2:40 - 3:30



High School (9-12) Special Education Special Day Class (SDC)  
**Moderate / Severe Special Day Class**  
**Phase 3 - In-Person Attendance**

Monday	Tuesday	Wednesday	Thursday	Friday
All students attend together				
<b>In-Person attendance on school site</b> 8:55 - 2:20	<b>In-Person attendance on school site</b> 8:55 - 2:20	Distance Learning from Home  8:00 - 2:30	<b>In-Person attendance on school site</b> 8:55 - 2:20	<b>In-Person attendance on school site</b> 8:55 - 2:20
Arrival and Screening 8:55 - 9:10	Arrival and Screening 8:55 - 9:10	<b>Required</b> 8:00 - 11:00 Live Interaction	Arrival and Screening 8:55 - 9:10	Arrival and Screening 8:55 - 9:10
In class Instruction 9:10 - 2:20	In class Instruction 9:10 - 2:20	Instructional schedules vary by grade - Schedules provided by classroom teacher	In class Instruction 9:10 - 2:20	In class Instruction 9:10 - 2:20
Instructional schedules vary by grade - Schedules provided by classroom teacher	Instructional schedules vary by grade - Schedules provided by classroom teacher	Independent Work 11:00 - 12:00	Instructional schedules vary by grade - Schedules provided by classroom teacher	Instructional schedules vary by grade - Schedules provided by classroom teacher
Bell schedules for lunch will vary by school and grade	Bell schedules for lunch will vary by school and grade	Suggested Student Lunch 12:00-12:35	Bell schedules for lunch will vary by school and grade	Bell schedules for lunch will vary by school and grade
Dismissal Get meals to go and load busses 2:20 - 2:40	Dismissal Get meals to go and load busses 2:20 - 2:40	Independent Work 12:35 - 2:30	Dismissal Get meals to go and load busses 2:20 - 2:40	Dismissal Get meals to go and load busses 2:20 - 2:40

**Project TEAM**  
**Phase 3- In-Person Attendance**

Monday	Tuesday	Wednesday	Thursday	Friday
All students attend together				
<b>In-Person attendance on school site</b> 7:30 - 11:15	<b>In-Person attendance on school site</b> 7:30 - 11:15	Distance Learning from Home 8:30 - 2:30	<b>In-Person attendance on school site</b> 7:30 - 11:15	<b>In-Person attendance on school site</b> 7:30 - 11:15
Arrival and Screening 7:30 - 7:45	Arrival and Screening 7:30 - 7:45	<b>Required</b> 8:30 - 11:10 Live Interaction  Instructional schedules will vary. Schedules determined by classroom teacher	Arrival and Screening 7:30 - 7:45	Arrival and Screening 7:30 - 7:45
In class Instruction 7:45 - 11:15  15 minute break  Instructional schedules will vary. Schedules determined by classroom teacher	In class Instruction 7:45 - 11:15  15 minute break  Instructional schedules will vary. Schedules determined by classroom teacher		In class Instruction 7:45 - 11:15  15 minute break  Instructional schedules will vary. Schedules determined by classroom teacher	In class Instruction 7:45 - 11:15  15 minute break  Instructional schedules will vary. Schedules determined by classroom teacher
Dismissal Get meals to go and load busses 11:15 - 11:45	Dismissal Get meals to go and load busses 11:15 - 11:45		Dismissal Get meals to go and load busses 11:15 - 11:45	Dismissal Get meals to go and load busses 11:15 - 11:45
Students transported home Student lunch time 11:45 - 12:30	Students transported home Student lunch time 11:45 - 12:30	Suggested Student Lunch 12:10 - 12:40	Students transported home Student lunch time 11:45 - 12:30	Students transported home Student lunch time 11:45 - 12:30
Independent Work 12:30 - 2:15	Independent Work 12:30 - 2:15	Independent Work 12:40 - 2:30	Independent Work 12:30 - 2:15	Independent Work 12:30 - 2:15

# **ARRIVAL AND DISMISSAL IN-PERSON ATTENDANCE AT-A-GLANCE PHASE 3**



**Arrival and Dismissal In-Person Attendance At-a-Glance**  
**Elementary / Middle School / High School**  
 Group A **Phase 3** - In-Person Attendance

Monday	Tuesday	Wednesday	Thursday	Friday
Group A				
<b>Elementary</b>  Arrival 8:50 - 9:15  Dismissal 2:15 - 2:30	<b>Elementary</b>  Arrival 8:50 - 9:15  Dismissal 2:15 - 2:30	Distance Learning	Distance Learning	Distance Learning
<b>Middle School</b>  Arrival 9:10 - 9:40  Dismissal 2:05 - 2:25  Independent Work 2:40 - 3:30	<b>Middle School</b>  Arrival 9:10 - 9:40  Dismissal 2:05 - 2:25  Independent Work 2:40 - 3:30			
<b>High School</b>  Independent Work 7:45 - 8:45  Arrival 8:55 - 9:25  Dismissal 2:20 - 2:40  Independent Work 2:40 - 3:30	<b>High School</b>  Independent Work 7:45 - 8:45  Arrival 8:55 - 9:25  Dismissal 2:20 - 2:40  Independent Work 2:40 - 3:30			

**Arrival and Dismissal In-Person Attendance At-a-Glance**  
**Elementary / Middle School / High School**  
 Group B **Phase 3** - In-Person Attendance

Monday	Tuesday	Wednesday	Thursday	Friday
Group B				
Distance Learning	Distance Learning	Distance Learning	<b>Elementary</b>  Arrival 8:50 - 9:15  Dismissal 2:15 - 2:30	<b>Elementary</b>  Arrival 8:50 - 9:15  Dismissal 2:15 - 2:30
			<b>Middle School</b>  Arrival 9:10 - 9:40  Dismissal 2:05 - 2:25  Independent Work 2:40 - 3:30	<b>Middle School</b>  Arrival 9:10 - 9:40  Dismissal 2:05 - 2:25  Independent Work 2:40 - 3:30
			<b>High School</b>  Independent Work 7:45 - 8:45  Arrival 8:55 - 9:25  Dismissal 2:20 - 2:40  Independent Work 2:40 - 3:30	<b>High School</b>  Independent Work 7:45 - 8:45  Arrival 8:55 - 9:25  Dismissal 2:20 - 2:40  Independent Work 2:40 - 3:30

## Arrival and Dismissal In-Person Attendance At-a-Glance

Mild/Moderate Special Education Special Day Class (SDC)

**Phase 3** - In-Person Attendance

Monday	Tuesday	Wednesday	Thursday	Friday
<b>Elementary (TK-6) Special Education Special Day Class (SDC)</b> <b>Mild/Moderate Special Day Class</b>				
<b>In-Person</b>  Arrival 8:50 - 9:15  Dismissal 2:15 - 2:30	<b>In-Person</b>  Arrival 8:50 - 9:15  Dismissal 2:15 - 2:30	Distance Learning	<b>In-Person</b>  Arrival 8:50 - 9:15  Dismissal 2:15 - 2:30	<b>In-Person</b>  Arrival 8:50 - 9:15  Dismissal 2:15 - 2:30
<b>Harrison Elementary Special Day Class</b>				
<b>In-Person</b>  Arrival 8:30 - 8:45  Dismissal 2:00 - 2:15	<b>In-Person</b>  Arrival 8:30 - 8:45  Dismissal 2:00 - 2:15	Distance Learning	<b>In-Person</b>  Arrival 8:30 - 8:45  Dismissal 2:00 - 2:15	<b>In-Person</b>  Arrival 8:30 - 8:45  Dismissal 2:00 - 2:15



## Arrival and Dismissal In-Person Attendance At-a-Glance

Special Education Special Day Class (SDC)

**Moderate Severe Special Day Class**

**Phase 3 - In-Person Attendance**

Monday	Tuesday	Wednesday	Thursday	Friday
<b>Elementary (TK-6) Special Education Special Day Class (SDC)</b> <b>Moderate Severe Special Day Class</b>				
<b>In-Person</b> Arrival 8:30 - 8:45  Dismissal 2:00 - 2:15	<b>In-Person</b> Arrival 8:30 - 8:45  Dismissal 2:00 - 2:15	Distance Learning	<b>In-Person</b> Arrival 8:30 - 8:45  Dismissal 2:00 - 2:15	<b>In-Person</b> Arrival 8:30 - 8:45  Dismissal 2:00 - 2:15
<b>Middle School (7-8) Special Education Special Day Class (SDC)</b> <b>Moderate Severe Special Day Class</b>				
<b>In-Person</b> Arrival 8:55 - 9:10  Dismissal 2:05 - 2:25	<b>In-Person</b> Arrival 8:55 - 9:10  Dismissal 2:05 - 2:25	Distance Learning	<b>In-Person</b> Arrival 8:55 - 9:10  Dismissal 2:05 - 2:25	<b>In-Person</b> Arrival 8:55 - 9:10  Dismissal 2:05 - 2:25
<b>High School (9-12) Special Education Special Day Class (SDC)</b> <b>Moderate Severe Special Day Class</b>				
<b>In-Person</b> Arrival 8:55 - 9:10  Dismissal 2:20 - 2:40	<b>In-Person</b> Arrival 8:55 - 9:10  Dismissal 2:20 - 2:40	Distance Learning	<b>In-Person</b> Arrival 8:55 - 9:10  Dismissal 2:20 - 2:40	<b>In-Person</b> Arrival 8:55 - 9:10  Dismissal 2:20 - 2:40

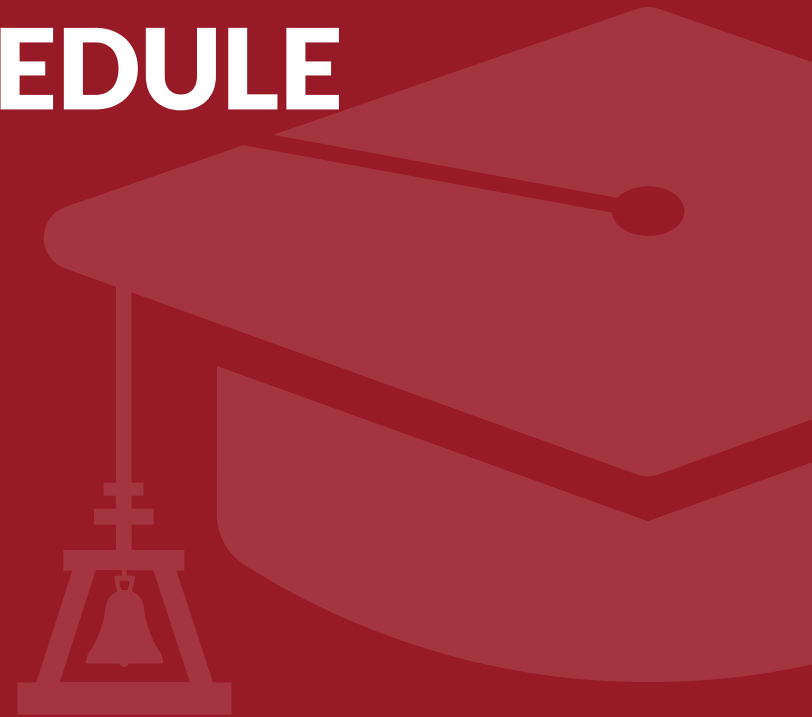
## Arrival and Dismissal In-Person Attendance At-a-Glance

Project TEAM

### Phase 3 - In-Person Attendance

Monday	Tuesday	Wednesday	Thursday	Friday
<b>In-Person</b> Arrival 7:30 - 7:45  Dismissal 11:15 - 11:45	<b>In-Person</b> Arrival 7:30 - 7:45  Dismissal 11:15 - 11:45	Distance Learning	<b>In-Person</b> Arrival 7:30 - 7:45  Dismissal 11:15 - 11:45	<b>In-Person</b> Arrival 7:30 - 7:45  Dismissal 11:15 - 11:45
Independent Work 12:30 - 2:15	Independent Work 12:30 - 2:15		Independent Work 12:30 - 2:15	Independent Work 12:30 - 2:15

# **PHASE 2 AND 3 PRESCHOOL SPECIAL DAY CLASS SCHEDULE**



## Preschool Special Education Special Day Class (SDC)

### Sunshine and Satellite Sites

#### Phase 2 and Phase 3 - In-Person Attendance

**AM Program** - Class will be split into two small groups

Group 1 (7:30 - 10:00) Group 2 (10:50 - 1:20)

Monday	Tuesday	Wednesday	Thursday	Friday
<b>In-person attendance Group 1 7:30-10:00</b>	<b>In-person attendance Group 1 7:30-10:00</b>	Distance Learning from Home 7:25 - 3:25	Distance Learning from Home  Instruction begins following the Distance Learning Schedules by program and teacher	Distance Learning from Home  Instruction begins following the Distance Learning Schedules by program and teacher
Arrival and Screening 7:30 - 7:45	Arrival and Screening 7:30 - 7:45	Independent Activity 7:25 - 9:00		
In class Instruction 7:45 - 9:45	In class Instruction 7:45 - 9:45	<b>Required</b> Live Interaction 9:00 - 10:30		
Dismissal 9:45 - 10:00	Dismissal 9:45 - 10:00			
<b>In-person attendance Group 2 10:50-1:20</b>	<b>In-person attendance Group 2 10:50-1:20</b>	Independent Activity 10:30 - 12:30		
Arrive to school 10:50 - 11:05	Arrive to school 10:50 - 11:05			
In class Instruction 11:05 - 1:05	In class Instruction 11:05 - 1:05	Suggested Lunch 12:30 -1:15		
Dismissal 1:05 - 1:20	Dismissal 1:05 - 1:20	Independent Activity 1:15 - 3:25		
Independent Activity 2:15 - 3:25	Independent Activity 2:15 - 3:25			

# Preschool Special Education Special Day Class (SDC)

## Sunshine and Satellite Sites

### Phase 2 and Phase 3 - In-Person Attendance

**PM Program** - Class will be split into two small groups

Group 1 (9:30-12:00) Group 2 (12:50-3:20)

Monday	Tuesday	Wednesday	Thursday	Friday
Distance Learning from Home  Instruction begins following the Distance Learning Schedules by program and teacher	Distance Learning from Home  Instruction begins following the Distance Learning Schedules by program and teacher	Distance Learning from Home 7:25 - 3:25	Independent Activity 7:45 - 9:05	Independent Activity 7:45 - 9:05
		Independent Activity 7:25 - 9:00	<b>In-person attendance Group 1</b> 9:30-12:00	<b>In-person attendance Group 1</b> 9:30-12:00
		<b>Required</b> Live Interaction 9:00 - 10:30	Arrival and Screening 9:30 - 9:45	Arrival and Screening 9:30 - 9:45
			Instruction 9:45 - 11:45	Instruction 9:45 - 11:45
		Independent Activity 10:30 - 12:30	Dismissal 11:45 - 12:00	Dismissal 11:45 - 12:00
			<b>In-person attendance Group 2</b> 12:50-3:20	<b>In-person attendance Group 2</b> 12:50-3:20
		Suggested Lunch 12:30 -1:15	Arrival and Screening 12:50 - 1:05	Arrival and Screening 12:50 - 1:05
		Independent Activity 1:15 - 3:25	Instruction 1:05 - 3:05	Instruction 1:05 - 3:05
			Dismissal 3:05 - 3:20	Dismissal 3:05 - 3:20

# **ARRIVAL AND DISMISSAL IN- PERSON ATTENDANCE AT-A-GLANCE PRESCHOOL**





**Arrival and Dismissal In-Person Attendance At-a-Glance**  
Preschool Special Day Class (SDC)  
**Sunshine and Satellite Sites**  
**Phase 2 and 3 - In-Person Attendance**

AM Preschool Groups 1 and 2				
Monday	Tuesday	Wednesday	Thursday	Friday
<b>In-Person AM Group 1</b>  Arrival 7:30 - 7:45  Dismissal 9:45 - 10:00	<b>In-Person AM Group 1</b>  Arrival 7:30 - 7:45  Dismissal 9:45 - 10:00	Distance Learning	Distance Learning	Distance Learning
<b>In-Person AM Group 2</b>  Arrival 10:50 - 11:05  Dismissal 1:05 - 1:20	<b>In-Person AM Group 2</b>  Arrival 10:50 - 11:05  Dismissal 1:05 - 1:20			

**Arrival and Dismissal In-Person Attendance At-a-Glance**  
Preschool Special Day Class (SDC)  
**Sunshine and Satellite Sites**  
**Phase 2 and 3 - In-Person Attendance**

PM Preschool Groups 1 and 2				
Monday	Tuesday	Wednesday	Thursday	Friday
Distance Learning	Distance Learning	Distance Learning	<b>In-Person PM Group 1</b>  Arrival 9:30 - 9:45  Dismissal 11:45 - 12:00	<b>In-Person PM Group 1</b>  Arrival 9:30 - 9:45  Dismissal 11:45 - 12:00
			<b>In-Person PM Group 2</b>  Arrival 12:50 - 1:05  Dismissal 3:05 - 3:20	<b>In-Person PM Group 2</b>  Arrival 12:50 - 1:05  Dismissal 3:05 - 3:20