



# Riverside Unified School District

## Citizens' Oversight Committee Report

April 10, 2018

Report by:



3380 14th Street | Riverside, CA 92501  
(951) 788-7135 [www.riversideunified.org](http://www.riversideunified.org)



### Committee Members

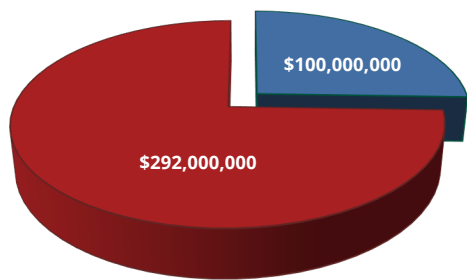
- ✓ Robert Beatty
- ✓ Mary Ann Bowman
- ✓ Adriana Curiel
- ✓ Richard Davis
- ✓ Tom Evans
- ✓ Bob Garcia
- ✓ Tina Grande-Field
- ✓ Keith Nelson
- ✓ Gabriela Plascencia
- ✓ James Rush
- ✓ Terry Walling
- ✓ Julie Williams
- ✓ Kathy Wright

## Measure O Overview

On November 8, 2016, the voters of the Riverside Unified School District approved Measure O General Obligation Bonds (the “Bonds”) with a 70% approval rate. Measure O will generate \$392 million dollars over the next 10 to 15 years to improve and build new capital facilities in Riverside Unified.

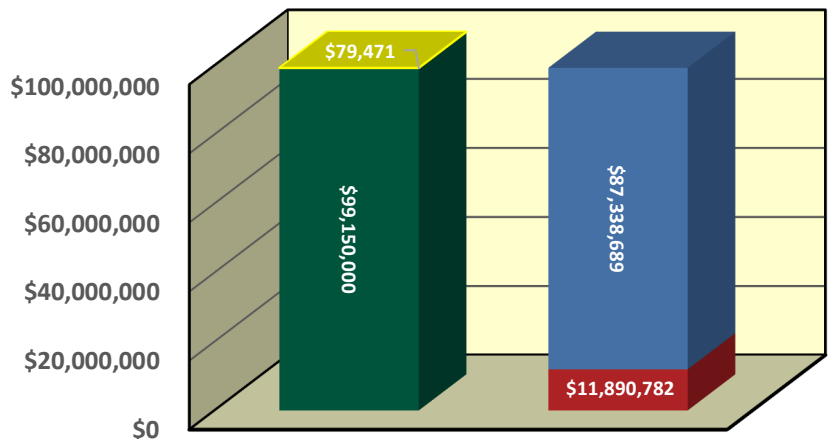
The Long Range Facility Master Plan completed in 2016 will serve as the guide to plan projects based on condition, educational program, capacity needs, and available State funding. The Bonds will be used to repair and upgrade District aging school infrastructure, classrooms and buildings, modernize school facilities with 21st century technology, improve access for students with disabilities, provide classroom and labs for career and technical education classes, improve school safety by modernizing security systems, retrofitting buildings to be earthquake proof, and upgrading emergency communications.

### Measure O Authorization



- G.O. Bonds Election of 2016, Series 2017
- Remaining Measure O Authorization - Pending

### Measure O Total Revenue = \$99,229,471



- Unencumbered Balance
- Measure O Total Encumbrances
- Interest Earnings Credit
- 2017 Series A Building Fund Deposit

# Board Decision Making Critical Principles

The Board of Education tasked District staff to prepare a list of project priorities based on the highest needs schools. District staff developed the following four critical principals and used a variety of resources to conduct an in-depth analysis of all of its school campuses including: an Analytical Hierarchy Process (AHP), California Department of Education Guidelines, Council of Educational Facilities Planners International, Geographical Information Systems (GIS), network contacts (other districts & organizations), site observations & historical data, and site surveying. Set forth below are the results of the weighted average calculations:

## Failing Systems 61.7%

1. Site Condition
2. Deferred Maintenance Needs
3. Age of Facilities
4. Level of Previous Modernization

## Statutory Requirements 24%

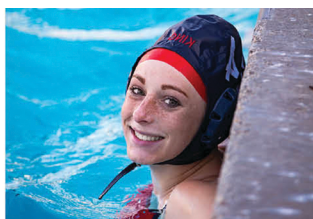
1. Americans with Disability Act  
*(ADA) Compliance*
2. Title 5 Compliance  
*(CDE Approvals)*
3. Title 9 & Parity Compliance  
*(Equity Amongst Schools & Genders)*
4. Non-DSA Field Act Buildings  
Compliance

## School Capacity 9.9%

1. Capacity Analysis
2. CDE Building Density
3. Excessive Number of Portables
4. Site Density (Parking)

## State & Local Funding 4.4%

1. Measure O G.O. Bonds
2. State Modernization Eligibility
3. State New Construction Eligibility
4. Developer Fees/CFD Funds





# Highest Need Schools Based on Critical Principles

## Group A School Projects

### *1<sup>st</sup> Bond Issuance (Planning & Construction)*

1. Harrison Elementary School
2. Highgrove Elementary School
3. Jefferson Elementary School
4. Madison Elementary School
5. Sierra Middle School

## Group C School Projects

### *1<sup>st</sup> Bond Issuance (Planning)*

### *2<sup>nd</sup> Bond Issuance (Construction)*

1. Adams Elementary School
2. Fremont Elementary School
3. Longfellow Elementary School
4. Magnolia Elementary School
5. University Middle School
6. Arlington High School

## Group E School Projects

### *3<sup>rd</sup> Bond Issuance*

1. Franklin Elementary School
2. Liberty Elementary School
3. Mountain View Elementary School
4. Pachappa Elementary School
5. Woodcrest Elementary School
6. Central Middle School
7. Ramona High School
8. North High School

## Group G School Projects

### *5<sup>th</sup> Bond Issuance*

1. Rivera Elementary School
2. Taft Elementary School
3. Earhart Middle School
4. Adult Education/Project Team
5. EOC/Summit View

## Group B School Projects

### *1<sup>st</sup> Bond Issuance (Planning)*

### *2<sup>nd</sup> Bond Issuance (Construction)*

1. Alcott Elementary School
2. Jackson Elementary School
3. Monroe Elementary School
4. Sunshine Early Childhood Center
5. Poly High School

## Group D School Projects

### *2<sup>nd</sup> Bond Issuance (Planning)*

### *3<sup>rd</sup> Bond Issuance (Construction)*

1. Bryant Elementary School
2. Highland Elementary School
3. Victoria Elementary School
4. Washington Elementary School
5. Chemawa Middle School
6. Gage Middle School

## Group F School Projects

### *4<sup>th</sup> Bond Issuance*

1. Castle View Elementary School
2. Emerson Elementary School
3. Lincoln High School
4. STEM School
5. King High School

## Group H School Projects

### *5<sup>th</sup> Bond Issuance*

6. Beatty Elementary School
7. Hawthorne Elementary School
8. Kennedy Elementary School
9. Lake Mathews Elementary School
10. Twain Elementary School
11. Miller Middle School



# Project Design Through Construction Steps

## Phase I

- ✓ Boots on the ground site assessment – Architect/Engineer (Design Team)
- ✓ Design Team prepares site analysis, findings & recommendations
- ✓ Design Team prepares schematics, options, and alternatives
- ✓ District staff provides Board update/Study Session

## Phase II

- ✓ Prepare Design & Construction Development Documents (Design Team and Construction Manager)
- ✓ Obtain State approvals (DSA, CDE, etc.)
- ✓ File State funding applications, as applicable
- ✓ Project bidding & advertising
- ✓ Construction

# Harrison Elementary School

## Measure O Campus Improvements



## Project Description

Harrison Elementary School was built in 1964. The site has 11 portable classroom buildings. Under Measure O, Harrison Elementary School will receive various improvements including new parking and drop-off, new classroom building, HVAC replacement and lighting and fire alarm replacement.

<b>Project Group:</b>	Group A
<b>Architect:</b>	ATI Architects & Engineers
<b>DSA Submittal:</b>	October 2018
<b>Bidding &amp; Award:</b>	February to June 2019
<b>Construction:</b>	June 2019 – May 2020
<b>Project Budget:</b>	\$12,369,531

## Project Status

The District has retained ATI Architects & Engineers to prepare the design plans for the modernization and new construction components of this project. District staff and ATI Architects are currently in the process of finalizing the schematic designs. DSA plans are expected to be submitted in approximately October of 2018. Upon DSA approval, District will proceed with the bidding and award process in February through June of 2019. Construction is expected to start in June of 2019 and is expected to last 12 months.

# Highgrove Elementary School

## Measure O Campus Improvements



## Project Description

Highgrove Elementary School was built in 1956. The site currently has 26 portable classroom buildings. Under Measure O, Highgrove Elementary School will receive site improvements, including new parking and drop-off, new classroom building, HVAC replacement, new lighting, and roof replacement.

**Project Group:** Group A  
**Architect:** Ruhnau Clarke Architects  
**DSA Submittal:** June 2018  
**Bidding & Award:** February to May 2019  
**Construction:** June 2019 – Aug 2020  
**Project Budget:** \$20,566,715

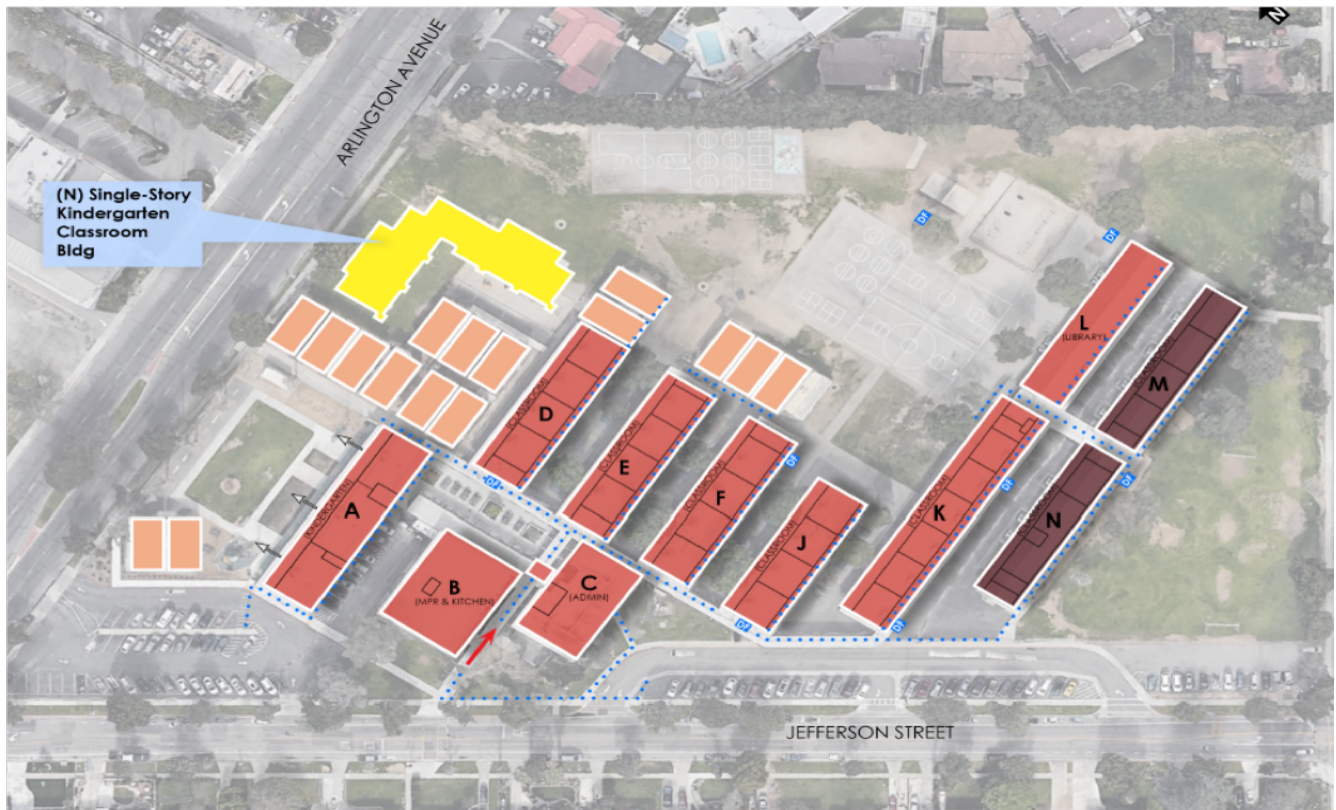
## Project Status

The District has retained Ruhnau Clarke Architects to prepare the design plans for this project. District staff and Ruhnau Clarke are currently in the process of finalizing the schematic designs. DSA plans are expected to be submitted in approximately June of 2018. Upon DSA approval, District will proceed with the bidding and award process in February through May of 2019. Construction is expected to start in June of 2019 and is expected to last 14 months.



# Jefferson Elementary School

## Measure O Campus Improvements



### Project Description

Jefferson Elementary School was built in 1948. The site currently has 16 portable classroom buildings. Under Measure O, Jefferson Elementary School will receive a new classroom building, HVAC replacement, new lighting and roof replacement.

<b>Project Group:</b>	Group A
<b>Architect:</b>	WLC Architects
<b>DSA Submittal:</b>	August 2018
<b>Bidding &amp; Award:</b>	April to July 2019
<b>Construction:</b>	July 2019 – July 2020
<b>Project Budget:</b>	\$16,577,715

### Project Status

The District has retained WLC Architects to prepare the design plans for the modernization and new construction components of this project. District staff and WLC Architects are currently in the process of finalizing the schematic designs. DSA plans are expected to be submitted in approximately August of 2018. Upon DSA approval, District will proceed with the bidding and award process in April through July of 2019. Construction is expected to start in July of 2019 and is expected to last 12 months.

# Fremont Elementary School

## Measure O Campus Improvements



## Project Description

Fremont Elementary School is one of the oldest schools in the District, built in 1917. The site currently has 12 portable classroom buildings. Under Measure O, Fremont Elementary School will receive a new classroom building, including new parking and drop-off, playground equipment, HVAC replacement, and roof replacement.

<b>Project Group:</b>	Group C
<b>Architect:</b>	Ruhnau Clarke Architects
<b>DSA Submittal:</b>	June 2018
<b>Bidding &amp; Award:</b>	2nd Bond Issuance
<b>Construction:</b>	2nd Bond Issuance
<b>Project Budget:</b>	\$18,672,952

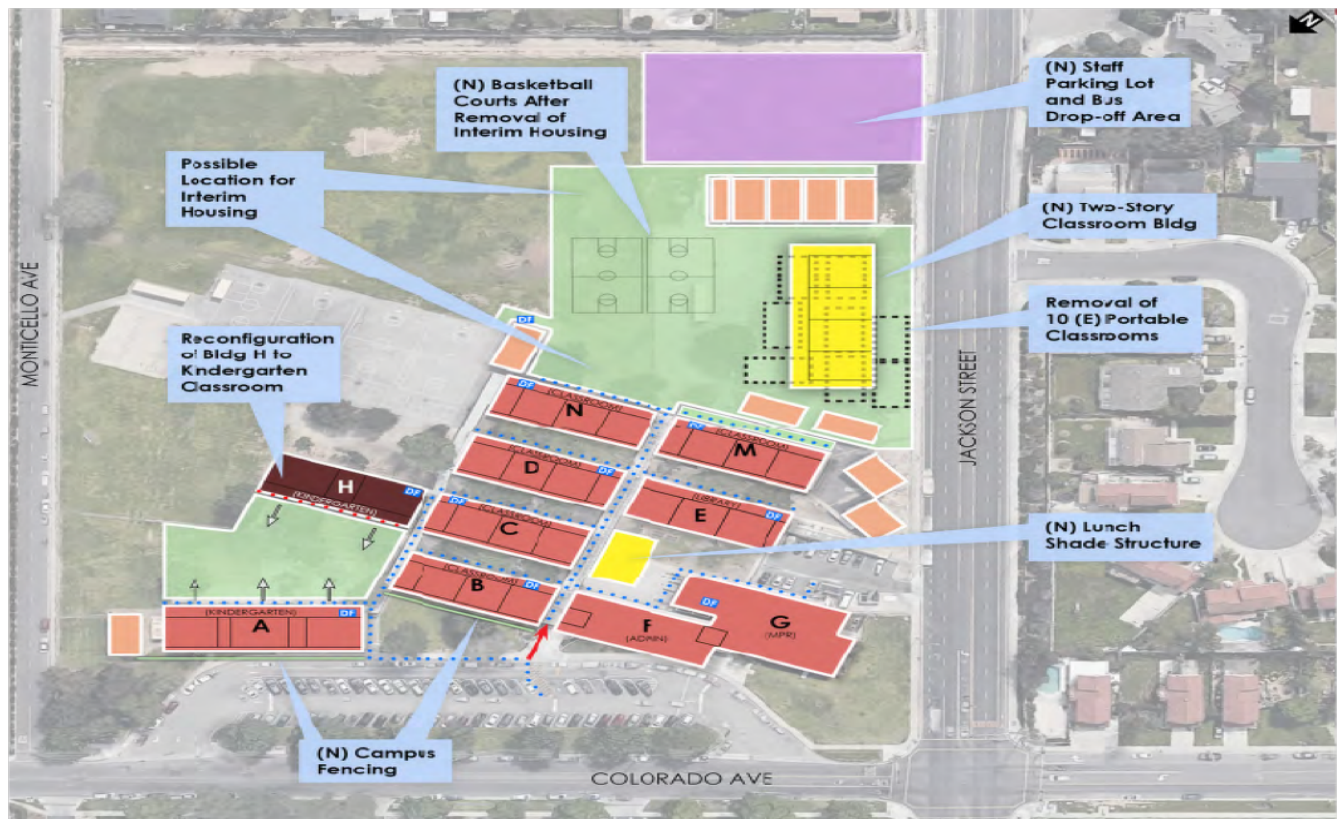
## Project Status

The District has retained Ruhnau Clarke Architects to prepare the design plans for this project. District staff and Ruhnau Clarke are currently in the process of finalizing the schematic designs. DSA plans are expected to be submitted in July of 2018. Upon DSA approval, District will proceed with the bidding and award process in February through May of 2020. Construction is expected to start in June of 2020 and is expected to last approximately 12 months.



# Jackson Elementary School

## Measure O Campus Improvements



## Project Description

Fremont Elementary School is one of the oldest schools in the District, built in 1917. The site currently has 12 portable classroom buildings. Under Measure O, Fremont Elementary School will receive a new classroom building, including new parking and drop-off, playground equipment, HVAC replacement, and roof replacement.

<b>Project Group:</b>	Group C
<b>Architect:</b>	Ruhnau Clarke Architects
<b>DSA Submittal:</b>	June 2018
<b>Bidding &amp; Award:</b>	2nd Bond Issuance
<b>Construction:</b>	2nd Bond Issuance
<b>Project Budget:</b>	\$18,672,952

## Project Status

The District has retained Ruhnau Clarke Architects to prepare the design plans for this project. District staff and Ruhnau Clarke are currently in the process of finalizing the schematic designs. DSA plans are expected to be submitted in July of 2018. Upon DSA approval, District will proceed with the bidding and award process in February through May of 2020. Construction is expected to start in June of 2020 and is expected to last approximately 12 months.



# Alcott Elementary School

## Measure O Campus Improvements



### Project Description

Alcott Elementary School was built in 1961. The site currently has 14 portable classroom buildings. Under Measure O, Alcott Elementary School will receive a new classroom building, new play area, new hardcourts, ADA upgrades and campus-wide modernization.

<b>Project Group:</b>	Group B
<b>Architect:</b>	DLR Architects
<b>DSA Submittal:</b>	July 2018
<b>Bidding &amp; Award:</b>	2nd Bond Issuance
<b>Construction:</b>	2nd Bond Issuance
<b>Project Budget:</b>	\$15,770,788

### Project Status

The District has retained DLR Group to prepare the design plans for the modernization and new construction components of this project. District staff and DLR Group are currently in the process of finalizing the Schematic Designs. DSA plans are expected to be submitted in approximately July of 2018. Upon DSA approval, District will proceed with the bidding and award process in January through March of 2019. Construction is expected to start in June of 2019 and is expected to last approximately 24 months.

# Longfellow Elementary School

## Measure O Campus Improvements



## Project Description

Longfellow Elementary School was built in 1947. It faces logistical challenges due to its small foot print and no onsite parking. The site currently has 12 portable classroom buildings. The school is on 6 acres. Under Measure O, it will receive a new classroom building, new play area, new hardcourts, ADA upgrades and campus wide modernization.

<b>Project Group:</b>	Group C
<b>Architect:</b>	DLR Architects
<b>DSA Submittal:</b>	August 2018
<b>Bidding &amp; Award:</b>	2nd Bond Issuance
<b>Construction:</b>	2nd Bond Issuance
<b>Project Budget:</b>	\$21,273,777

# Magnolia Elementary School

## Measure O Campus Improvements



## Project Description

Magnolia Elementary School is one of the oldest schools in the District, built 1898. The site currently has 17 portable classroom buildings. Under Measure O, Magnolia Elementary School will receive a new parking with drop off and pick-up, new classroom building, new kinder play area and play field and landscape upgrades.

<b>Project Group:</b>	Group C
<b>Architect:</b>	ATI Architects
<b>DSA Submittal:</b>	September 2018
<b>Bidding &amp; Award:</b>	2nd Bond Issuance
<b>Construction Start:</b>	2nd Bond Issuance
<b>Project Budget:</b>	\$10,569,976

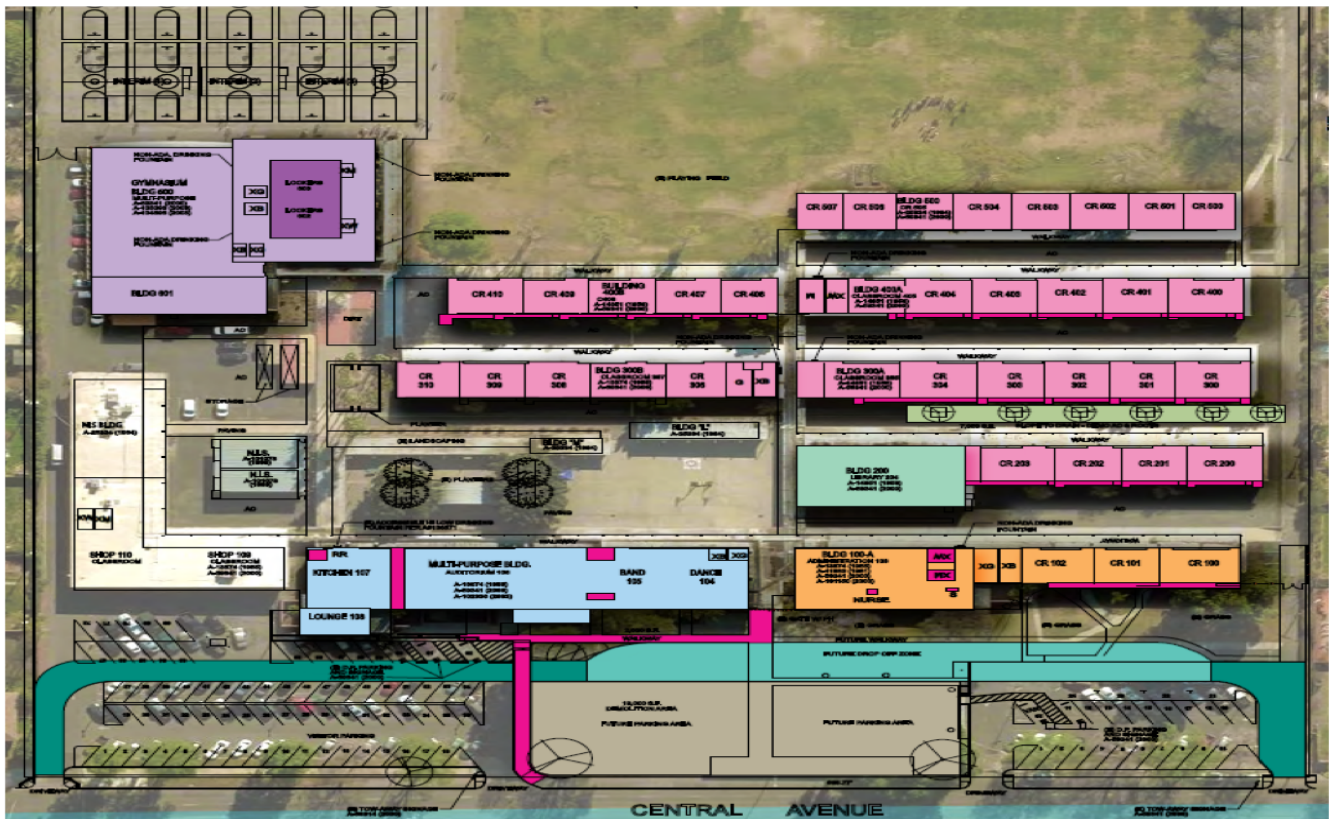
## Project Status

The District has retained ATI Architects & Engineers to prepare the design plans for this project. District staff and ATI Architects are currently in the process of finalizing the schematic designs. DSA plans are expected to be submitted in approximately September of 2018. Upon DSA approval, District will proceed with the bidding and award process in 2019.



# Sierra Middle School

## Measure O Campus Improvements



## Project Description

Sierra Middle School was built in 1957. Under Measure O, Sierra Middle School will receive a light, medium and heavy modernization. The different stages of modernization consist of HVA replacement, light and fire alarm upgrades, ADA accessibility improvements, renovation of SDC classrooms, interior finishes and parking lot expansion.

<b>Project Group:</b>	Group A
<b>Architect:</b>	TBP Architects
<b>DSA Submittal:</b>	July 2018
<b>Bidding &amp; Award:</b>	February 2019
<b>Construction:</b>	Feb 2019 – Feb 2020
<b>Project Budget:</b>	\$9,981,631

## Project Status

The District has retained TBP Architecture, Inc. to prepare the design plans for this project. District staff and TBP Architecture are currently in the process of finalizing the Schematic Designs. DSA plans are expected to be submitted in approximately July of 2018. Upon DSA approval, District will proceed with the bidding and award process in December through February of 2019. Construction is expected to start in February of 2019 and is expected to last approximately 12 months.

# Monroe Elementary School

## Measure O Campus Improvements



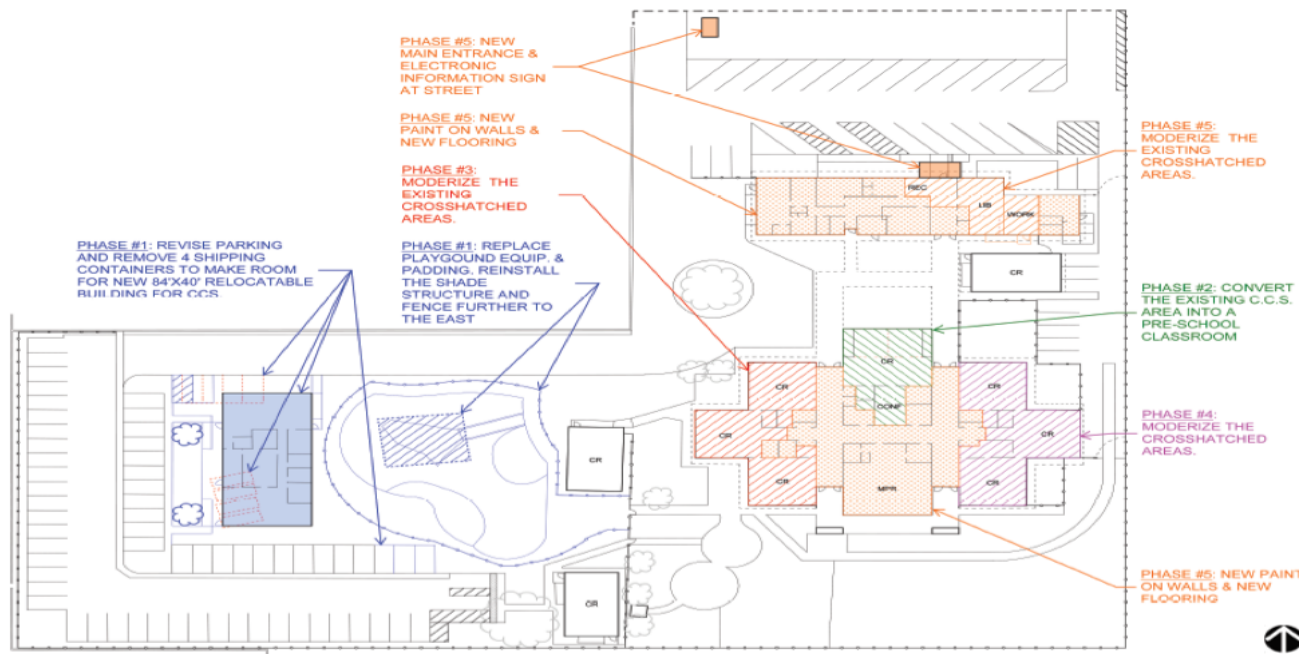
## Project Description

Monroe Elementary School was built in 1955. The site currently has 7 portables. Under Measure O, Monroe Elementary School will receive a new classroom building, new parking and pick-up and drop-off, a restroom expansion, new lunch shelter, HVAC replacement and plumbing upgrade.

<b>Project Group:</b>	Group B
<b>Architect:</b>	HMC Architects
<b>DSA Submittal:</b>	July 2018
<b>Bidding &amp; Award:</b>	2nd Bond Issuance
<b>Construction:</b>	2nd Bond Issuance
<b>Project Budget:</b>	\$22,559,765

# Sunshine Elementary School

## Measure O Campus Improvements



## Project Description

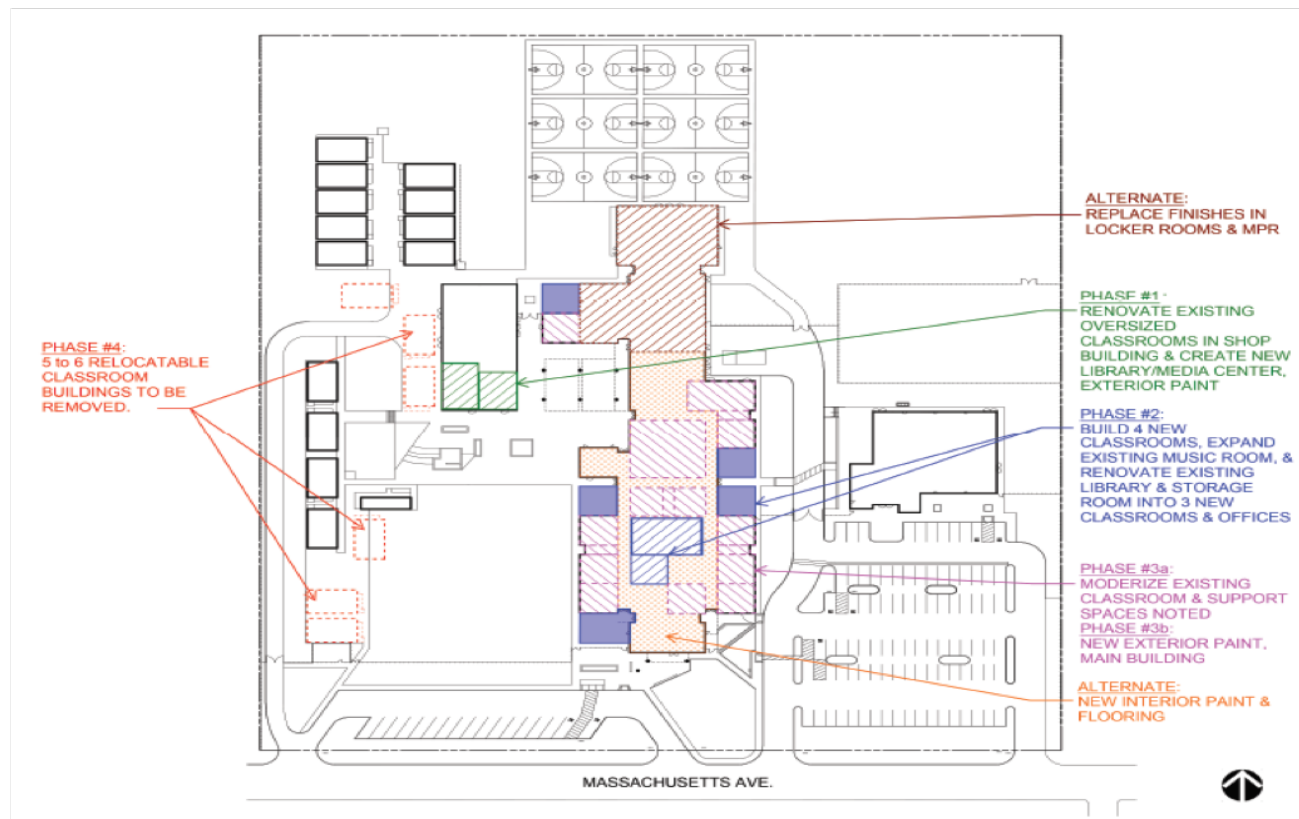
Sunshine Elementary School was built in 1947. The site currently has 3 portable classroom buildings. The site also houses the California Children Services (CCS), a county program that services students with special needs. Under Measure O, the site will receive a new portable building to relocate the CCS which will relieve 3,000+ square feet for students of Sunshine. The site will also receive a new play structure, a light modernization, and a front campus facelift.

<b>Project Group:</b>	Group B
<b>Architect:</b>	GO Architects
<b>DSA Submittal:</b>	July 2018
<b>Bidding &amp; Award:</b>	2nd Bond Issuance
<b>Construction Start:</b>	2nd Bond Issuance
<b>Project Budget:</b>	\$3,589,786



# University Middle School

## Measure O Campus Improvements



## Project Description

University Middle School was built in 1979. The site currently has 19 portable classroom buildings. Under Measure O, the site will receive four new classrooms within its existing square footage, expansion of the music room, new finishes and relocation of existing library.

<b>Project Group:</b>	Group C
<b>Architect:</b>	GO Architects
<b>DSA Submittal:</b>	September 2018
<b>Bidding &amp; Award:</b>	2nd Bond Issuance
<b>Construction:</b>	2nd Bond Issuance
<b>Project Budget:</b>	\$6,858,249

# Poly High School

## Measure O Campus Improvements



## Project Description

Poly High School was built in 1965. The site currently has 18 portable classroom buildings. The school is on 40 acres of land. Under Measure O, the scope being proposed are ADA upgrade to the main campus, a new parking lot, and relocation of the varsity baseball and softball fields to the adjacent property located at the corner of Victoria and Central. This scope is still being vetted and has not been approved by the RUSD Board of Education.

<b>Project Group:</b>	Group B
<b>Architect:</b>	WLC Architects
<b>DSA Submittal:</b>	August 2018
<b>Bidding &amp; Award:</b>	2nd Bond Issuance
<b>Construction:</b>	2nd Bond Issuance
<b>Project Budget:</b>	\$24,039,894

# Adams Elementary School

## Measure O Campus Improvements



..... VEHICULAR PATH OF TRAVEL  
 - - - - - PROPERTY LINE

BUILDINGS	
NEW KINDER BUILDING	\$ 3,744,180
LOW-LEVEL RENO. (3) PORTABLES	
(5) REMOVE EXISTING PORTABLES	
(3) RELOCATE EXISTING PORTABLES	
(1) DEMOLISH STORAGE UNIT	\$ 299,384
<b>TOTAL BUILDING RENOVATION</b>	<b>\$ 299,384</b>
SITE	
NEW DROP OFF	\$ 187,550
NEW PARKING	\$ 736,560
HARDSCAPE IMPROVEMENTS	\$ 864,671
EXTERIOR FENCE IMPROVEMENTS	\$ 33,477
NEW FENCE	\$ 136,366
NEW KINDER PLAY GROUND	\$ 376,420
NEW STORM WATER TREATMENT	\$ 132,990
SAND PIT PLAY AREA IMPROVEMENTS	\$ 115,940
SITE UTILITIES IMPROVEMENTS	\$ 882,080
<b>TOTAL SITE IMPROVEMENTS</b>	<b>\$ 3,466,054</b>
<b>TOTAL CONSTRUCTION ESTIMATE</b>	<b>\$ 9,797,046</b>
ADD. ALTERNATE LIGHTING & CONTROLS \$102,709	

4

RIVERSIDE UNIFIED SCHOOL DISTRICT

## Project Description

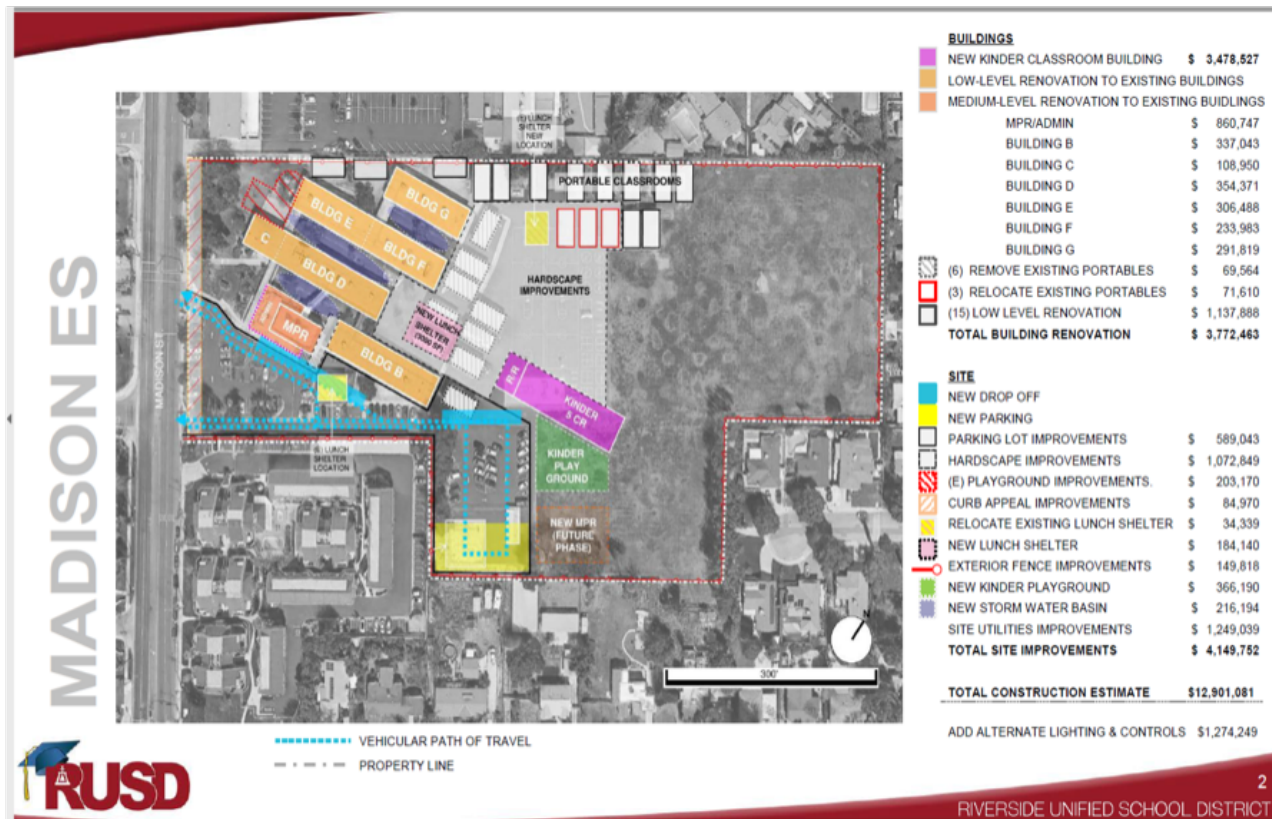
Adams Elementary School was built in 1962. The site currently has 8 portable classroom buildings. Under Measure O, Adams will receive a new kinder building, new parking lot, drop off and pick up, new play area and new storm water treatment.

<b>Project Group:</b>	Group C
<b>Architect:</b>	LPA Architects
<b>DSA Submittal:</b>	
<b>Bidding &amp; Award:</b>	2nd Bond Issuance
<b>Construction:</b>	2nd Bond Issuance
<b>Project Budget:</b>	\$ 13,995,922



# Madison Elementary School

## Measure O Campus Improvements



## Project Description

Madison Elementary School was built in 1952. The site currently has 21 portable classroom buildings. Under Measure O, the project will receive a new kinder building, play area, light modernization, new lunch shelter.

**Project Group:** Group A  
**Architect:** LPA Architects  
**DSA Submittal:** December 2018  
**Bidding & Award:**  
**Construction:** July 2019  
**Project Budget:** \$ 18,631,461

# Groups A, B & C Preliminary Budget Estimates

No.	District Project Name	Project Preliminary Budget Estimates *	Current Project Phase
<b>GROUP A PROJECTS (Planning &amp; Construction Costs)</b>			
1	Harrison Elementary School	\$12,369,531.00	Planning & Construction
2	Highgrove Elementary School	20,566,715.00	Planning & Construction
3	Jefferson Elementary School	16,577,715.00	Planning & Construction
4	Madison Elementary School	18,631,461.00	Planning & Construction
5	Sierra Middle School	9,981,631.00	Planning & Construction
6	STEM Center at UCR	<u>6,000,000.00</u>	Planning & Construction
GROUP A PRELIMINARY PROJECT BUDGET:		\$84,127,053.00	
<b>GROUP B PROJECTS (Planning)</b>			
7	Alcott Elementary School	\$15,770,788.00	Planning
8	Jackson Elementary School	18,810,274.00	Planning
9	Monroe Elementary School	22,559,765.00	Planning
10	Sunshine Early Childhood Center	3,589,786.00	Planning
11	Poly High School	24,039,894.00	Planning
12	Arlington High School	<u>16,107,776.00</u>	Planning
GROUP B PRELIMINARY PROJECT BUDGET:		\$100,878,283.00	
<b>GROUP C PROJECTS (Planning)</b>			
13	Adams Elementary School	\$13,995,922.00	Planning
14	Fremont Elementary School	18,672,952.00	Planning
15	Longfellow Elementary School	21,273,777.00	Planning
16	Magnolia Elementary School	10,569,976.00	Planning
17	University Middle School	<u>6,858,249.00</u>	Planning
GROUP C PRELIMINARY PROJECT BUDGET:		\$71,370,876.00	
GROUPS A, B & C PRELIMINARY BUDGETS:		<u>\$256,376,212.00</u>	

\* The balance of the Series A G.O. Bonds will be allocated for Groups B and C Planning costs.

## Potential State Grants for Groups A, B & C Projects

The Riverside Unified School District will make every effort to augment its Measure O G.O. Bonds with future State eligible grants. Set forth below are estimated State new construction and modernization grant funding amounts that the District may be eligible for under the State's School Facility Program ("SFP"). The State passed a State School Bond Measure in November of 2016. However, the receipt of potential State grants is predicated on: 1) the Governor agreeing to issue State School Bonds, 2) the District meeting the State's eligibility requirements, and 3) the State funding levels remaining at current levels.

No.	School Project Name	Potential Estimated State Grants *	District Estimated Share of Project	Estimated Project Budget
1	Harrison Elementary School - Modernization Grants	\$1,328,522.00	\$11,041,009.00	\$12,369,531.00
	Harrison Elementary School - New Construction Grants	\$3,000,000.00		
3	Highgrove Elementary School - Modernization Grants	3,246,134.00	17,320,581.00	20,566,715.00
	Highgrove Elementary School - New Construction Grants	3,782,587.00		
5	Jefferson Elementary School - Modernization Grants	4,767,751.00	11,809,964.00	16,577,715.00
7	Madison Elementary School - Modernization Grants	3,172,403.00	15,459,058.00	18,631,461.00
9	Sierra Middle School - Modernization Grants	4,385,673.00	5,595,958.00	9,981,631.00
11	Alcott Elementary School - Modernization Grants	3,062,172.00	12,708,616.00	15,770,788.00
13	Jackson Elementary School - Modernization Grants	4,024,164.00	14,786,110.00	18,810,274.00
	Jackson Elementary School - New Construction Grants	600,000.00		
15	Monroe Elementary School - Modernization Grants	3,307,225.00	19,252,540.00	22,559,765.00
17	Sunshine Early Childhood Center - Modernization Grants	1,224,606.00	2,365,180.00	3,589,786.00
19	Poly High School - Modernization Grants	3,660,212.00	20,379,682.00	24,039,894.00
21	Arlington High School - Modernization Grants	1,079,371.00	15,028,405.00	16,107,776.00
23	Adams Elementary School - Modernization Grants	2,419,000.00	11,576,922.00	13,995,922.00
25	Fremont Elementary School - Modernization Grants	1,137,052.00	17,535,900.00	18,672,952.00
	Fremont Elementary School - New Construction Grants	581,882.00		
27	Longfellow Elementary School - Modernization Grants	3,472,769.00	17,801,008.00	21,273,777.00
29	Magnolia Elementary School - Modernization Grants	523,797.00	10,046,179.00	10,569,976.00
31	University Middle School - Modernization Grants	392,201.00	6,466,048.00	6,858,249.00
<b>COMBINED TOTAL:</b>		<b>\$49,167,521.00</b>	<b>\$209,173,160.00</b>	<b>\$250,376,212.00</b>

\* Receipt of State funding is predicated on the Governor issuing State School Bonds under voter approved Prop. 51; 2) the District meeting the State's eligibility requirements; and 3) the State funding amounts remaining at the current 50/50 for new construction and 60/40 for modernization projects.



# Project Commitments & Expenditures

No.	District Project Name	Measure O Project Commitments	Measure O Project Expenditures	Remaining Commitment Balances	Current Project Phase
<b>GROUP A PROJECTS (Planning &amp; Construction Costs)</b>					
1	Harrison Elementary School	\$542,143.00	(\$62,954.22)	\$479,188.78	Planning & Construction
2	Highgrove Elementary School	927,592.00	(61,285.60)	866,306.40	Planning & Construction
3	Jefferson Elementary School	1,016,628.00	(84,939.60)	931,688.40	Planning & Construction
4	Madison Elementary School	1,040,104.00	(16,023.48)	1,024,080.52	Planning & Construction
5	Sierra Middle School	637,670.00	(48,500.00)	589,170.00	Planning & Construction
6	STEM High School	<u>2,110,469.50</u>	<u>(153,271.50)</u>	<u>1,957,198.00</u>	Planning & Construction
GROUP A PROJECT TOTALS:		\$6,274,606.50	(\$426,974.40)	\$5,847,632.10	
<b>GROUP B PROJECTS (Planning)</b>					
7	Alcott Elementary School	\$589,264.00	\$0.00	\$589,264.00	Planning
8	Jackson Elementary School	379,843.00	(50,464.88)	329,378.12	Planning
9	Monroe Elementary School	286,828.00	0.00	286,828.00	Planning
10	Sunshine Early Childhood Center	182,652.00	(29,107.94)	153,544.06	Planning
11	Poly High School	<u>1,229,863.80</u>	<u>(98,898.80)</u>	<u>1,130,965.00</u>	Planning
GROUP B PROJECT TOTALS:		\$2,668,450.80	(\$178,471.62)	\$2,489,979.18	
<b>GROUP C PROJECTS (Planning)</b>					
12	Adams Elementary School	\$326,838.00	(\$9,781.25)	\$317,056.75	Planning
13	Fremont Elementary School	173,000.00	(34,161.50)	138,838.50	Planning
14	Longfellow Elementary School	484,275.00	(13,750.00)	470,525.00	Planning
15	Magnolia Elementary School	393,572.00	(66,898.96)	326,673.04	Planning
16	University Middle School	0.00	0.00	0.00	Planning
17	Arlington High School	<u>28,525.00</u>	<u>0.00</u>	<u>28,525.00</u>	Planning
GROUP C PROJECT TOTALS:		\$1,406,210.00	(\$124,591.71)	\$1,281,618.29	
<b>Groups D, E, F, &amp; H Projects</b>					
18	105-9772 - Maxine Frost Elementary - New Construction	\$38,350.00	(\$20,044.06)	\$18,305.94	Planning
19	112-9776 - Franklin Elementary School - Modernization	110,883.00	(46,715.54)	64,167.46	Planning
20	144-9776 - Mt. View Elementary School - Modernization	122,557.00	(6,352.50)	116,204.50	Planning
21	146-9776 - Pachappa Elementary School - Modernization	128,834.00	(8,250.00)	120,584.00	Planning
22	150-9776 - Taft Elementary - Modernization	103,822.00	(31,893.06)	71,928.94	Planning
23	154-9776 - Washington Elementary School - Modernization	23,939.85	(21,893.85)	2,046.00	Planning
24	156-9776 - Woodcrest Elementary School - Modernization	48,867.00	(20,170.63)	28,696.37	Planning
25	230-9776 - Earhart Middle School - Modernization	148,332.00	(12,350.00)	135,982.00	Planning
26	260-9776 - Woodcrest Elementary School - Modernization	311,222.00	(55,426.50)	255,795.50	Planning
27	320-9772 - King High School - New Construction	41,545.00	(40,284.00)	1,261.00	Planning
28	350-9776 - Ramona High School - Modernization	315,417.00	(14,450.00)	300,967.00	Planning
29	612-0000 - Facilities Projects - Undistributed	147,231.38	(79,250.72)	67,980.66	Planning
30	612-9772 - Facilities Projects - New Construction	342.44	(342.44)	0.00	Planning
31	612-9776 - Facilities Projects - Modernization	172.28	(172.28)	0.00	Planning
GROUPS D, E, F, & H PROJECT TOTALS:		\$1,541,514.95	(\$357,595.58)	\$1,183,919.37	
District Financials as of 3/31/2018					
MEASURE O COMMITMENTS & EXPENDITURES:		<u>\$11,890,782.25</u>	<u>(\$1,087,633.31)</u>	<u>\$10,803,148.94</u>	

# Measure O Project Expenditure Backup

From *CFS InternetAccess*  
Inception to March 17, 2018



## Riverside Unified School District

---

3380 14th Street  
Riverside, CA 92501

(951) 788-7135  
[www.riversideunified.org](http://www.riversideunified.org)

# Encumbrance Report

## Riverside Unified School District

*Encumbrances, Expenses and Current Liabilities*

VENDOR	ENCUMBRANCE	EXPENDITURE	BALANCE	DESCRIPTION
--------	-------------	-------------	---------	-------------

### 102-9776 - Adams Elementary School - Modernization

Chicago Title Company	\$1,025.00	\$0.00	\$1,025.00	Title Fees
J. Glenna Construction Inc.	\$1,450.00	\$0.00	\$1,450.00	Construction Costs
LPA Architects	\$324,363.00	(\$9,781.25)	\$314,581.75	Architect Fees
	\$326,838.00	(\$9,781.25)	\$317,056.75	Project Totals for 102-9776 - Adams Elementary School - Modernization

### 104-9772 - Alcott Elementary School - New Construction

Chicago Title Company	\$5,000.00	\$0.00	\$5,000.00	Title Fees
DLR Group, Inc.	\$216,957.00	\$0.00	\$216,957.00	Architect Fees
	\$221,957.00	\$0.00	\$221,957.00	Project Totals for 104-9772 - Alcott Elementary School - New Construction

### 104-9776 - Alcott Elementary School - Modernization

Chicago Title Company	\$1,025.00	\$0.00	\$1,025.00	Title Fees
DLR Group, Inc.	\$336,232.00	\$0.00	\$336,232.00	Architect Fees
Kelsoe & Associates, Inc.	\$12,200.00	\$0.00	\$12,200.00	Site Survey
KNA Structural Engineers, Inc.	\$10,000.00	\$0.00	\$10,000.00	Engineering Costs
Util-Locate, Inc	\$7,850.00	\$0.00	\$7,850.00	Other Construction Costs
	\$367,307.00	\$0.00	\$367,307.00	Project Totals for 104-9776 - Alcott Elementary School - Modernization

### 105-9772 - Maxine Frost Elementary - New Construction

Albert A. Webb Associates	\$8,500.00	\$0.00	\$8,500.00	Site Survey
Integra Realty Resources - Los Angeles	\$8,000.00	(\$8,000.00)	\$0.00	Site Costs
Placeworks	\$21,850.00	(\$12,044.06)	\$9,805.94	Site Costs
	\$38,350.00	(\$20,044.06)	\$18,305.94	Project Totals for 105-9772 - Maxine Frost Elementary - New Construction

### 112-9776 - Franklin Elementary School - Modernization

Chicago Title Company	\$750.00	(\$750.00)	\$0.00	Title Fees
HMC Architects	\$99,633.00	(\$35,853.04)	\$63,779.96	Architect Fees
Hunsaker & Associates Irvine, Inc.	\$10,500.00	(\$10,112.50)	\$387.50	Site Survey
	\$110,883.00	(\$46,715.54)	\$64,167.46	Project Totals for 112-9776 - Franklin Elementary School - Modernization

### 114-9776 - Fremont Elementary School - Modernization

Chicago Title Company	\$750.00	(\$750.00)	\$0.00	Title Fees
Epic Engineers	\$11,600.00	(\$11,600.00)	\$0.00	Engineering Costs
Ruhnau Ruhnau Clarke & Associates	\$151,775.00	(\$21,811.50)	\$129,963.50	Architect Fees
Util-Locate, Inc	\$8,875.00	\$0.00	\$8,875.00	Other Construction Costs
	\$173,000.00	(\$34,161.50)	\$138,838.50	Project Totals for 114-9776 - Fremont Elementary School - Modernization

### 118-9772 - Harrison Elementary School - New Construction



# Encumbrance Report

## Riverside Unified School District

*Encumbrances, Expenses and Current Liabilities*

VENDOR	ENCUMBRANCE	EXPENDITURE	BALANCE	DESCRIPTION
ATI Architects & Engineers	\$282,524.00	(\$27,737.62)	\$254,786.38	Architect Fees
	\$282,524.00	(\$27,737.62)	\$254,786.38	Project Totals for 118-9772 - Harrison Elementary School - New Construction

### 118-9776 - Harrison Elementary School - Modernization

ATI Architects & Engineers	\$238,394.00	(\$22,866.60)	\$215,527.40	Architect Fees
Chicago Title Company	\$750.00	(\$750.00)	\$0.00	Title Fees
Epic Engineers	\$11,600.00	(\$11,600.00)	\$0.00	Engineering Costs
Util-Locate, Inc	\$8,875.00	\$0.00	\$8,875.00	Other Construction Costs
	\$259,619.00	(\$35,216.60)	\$224,402.40	Project Totals for 118-9776 - Harrison Elementary School - Modernization

### 122-9772 - Highgrove Elementary School - New Construction

Ruhnau Ruhnau Clarke & Associates	\$400,036.00	\$0.00	\$400,036.00	Architect Fees
	\$400,036.00	\$0.00	\$400,036.00	Project Totals for 122-9772 - Highgrove Elementary School - New Construction

### 122-9776 - Highgrove Elementary School - Modernization

Chicago Title Company	\$750.00	(\$750.00)	\$0.00	Title Fees
Epic Engineers	\$11,600.00	(\$11,600.00)	\$0.00	Engineering Costs
Ruhnau Ruhnau Clarke & Associates	\$504,356.00	(\$48,935.60)	\$455,420.40	Architect Fees
Util-Locate, Inc	\$10,850.00	\$0.00	\$10,850.00	Other Construction Costs
	\$527,556.00	(\$61,285.60)	\$466,270.40	Project Totals for 122-9776 - Highgrove Elementary School - Modernization

### 128-9776 - Jackson Elementary School - Modernization

Chicago Title Company	\$750.00	\$0.00	\$750.00	Title Fees
Hunsaker & Associates Irvine, Inc.	\$10,500.00	(\$9,994.50)	\$505.50	Site Survey
Util-Locate, Inc	\$7,850.00	\$0.00	\$7,850.00	Other Construction Costs
WLC Architects, Inc.	\$360,743.00	(\$40,470.38)	\$320,272.62	Architect Fees
	\$379,843.00	(\$50,464.88)	\$329,378.12	Project Totals for 128-9776 - Jackson Elementary School - Modernization

### 130-9772 - Jefferson Elementary School - New Construction

WLC Architects, Inc.	\$277,524.00	(\$20,439.30)	\$257,084.70	Architect Fees
	\$277,524.00	(\$20,439.30)	\$257,084.70	Project Totals for 130-9772 - Jefferson Elementary School - New Construction

### 130-9776 - Jefferson Elementary School - Modernization

Chicago Title Company	\$750.00	(\$750.00)	\$0.00	Title Fees
Hunsaker & Associates Irvine, Inc.	\$10,500.00	(\$10,500.00)	\$0.00	Site Survey
Util-Locate, Inc	\$7,850.00	\$0.00	\$7,850.00	Other Construction Costs
WLC Architects, Inc.	\$720,004.00	(\$53,250.30)	\$666,753.70	Architect Fees
	\$739,104.00	(\$64,500.30)	\$674,603.70	Project Totals for 130-9776 - Jefferson Elementary School - Modernization

### 136-9772 - Longfellow Elementary School - New Construction

# Encumbrance Report

## Riverside Unified School District

*Encumbrances, Expenses and Current Liabilities*

VENDOR	ENCUMBRANCE	EXPENDITURE	BALANCE	DESCRIPTION
DLR Group, Inc.	\$187,141.00	\$0.00	\$187,141.00	Architect Fees
	\$187,141.00	\$0.00	\$187,141.00	Project Totals for 136-9772 - Longfellow Elementary School - New Construction

### 136-9776 - Longfellow Elementary School - Modernization

Chicago Title Company	\$750.00	(\$750.00)	\$0.00	Title Fees
DLR Group, Inc.	\$283,384.00	\$0.00	\$283,384.00	Architect Fees
Kelsoe & Associates, Inc.	\$13,000.00	(\$13,000.00)	\$0.00	Site Survey
New Vendor	\$0.00	\$0.00	\$0.00	
	\$297,134.00	(\$13,750.00)	\$283,384.00	Project Totals for 136-9776 - Longfellow Elementary School - Modernization

### 138-9772 - Madison Elementary School - New Construction

LPA Architects	\$541,288.00	\$0.00	\$541,288.00	Architect Fees
	\$541,288.00	\$0.00	\$541,288.00	Project Totals for 138-9772 - Madison Elementary School - New Construction

### 138-9776 - Madison Elementary School - Modernization

Chicago Title Company	\$1,025.00	\$0.00	\$1,025.00	Title Fees
Kelsoe & Associates, Inc.	\$12,200.00	\$0.00	\$12,200.00	Site Survey
LPA Architects	\$476,716.00	(\$16,023.48)	\$460,692.52	Architect Fees
Util-Locate, Inc	\$8,875.00	\$0.00	\$8,875.00	Other Construction Costs
	\$498,816.00	(\$16,023.48)	\$482,792.52	Project Totals for 138-9776 - Madison Elementary School - Modernization

### 140-9772 - Magnolia Elementary School - New Construction

ATI Architects & Engineers	\$226,957.00	(\$33,562.06)	\$193,394.94	Architect Fees
	\$226,957.00	(\$33,562.06)	\$193,394.94	Project Totals for 140-9772 - Magnolia Elementary School - New Construction

### 140-9776 - Magnolia Elementary School - Modernization

ATI Architects & Engineers	\$146,415.00	(\$20,986.90)	\$125,428.10	Architect Fees
Chicago Title Company	\$750.00	(\$750.00)	\$0.00	Title Fees
Epic Engineers	\$11,600.00	(\$11,600.00)	\$0.00	Engineering Costs
Util-Locate, Inc	\$7,850.00	\$0.00	\$7,850.00	Other Construction Costs
	\$166,615.00	(\$33,336.90)	\$133,278.10	Project Totals for 140-9776 - Magnolia Elementary School - Modernization

### 142-9776 - Monroe Elementary School - Modernization

Chicago Title Company	\$1,025.00	\$0.00	\$1,025.00	Title Fees
HMC Architects	\$275,103.00	\$0.00	\$275,103.00	Architect Fees
Kelsoe & Associates, Inc.	\$10,700.00	\$0.00	\$10,700.00	Site Survey
	\$286,828.00	\$0.00	\$286,828.00	Project Totals for 142-9776 - Monroe Elementary School - Modernization

### 144-9776 - Mt. View Elementary School - Modernization

Chicago Title Company	\$750.00	(\$750.00)	\$0.00	Title Fees
-----------------------	----------	------------	--------	------------

# Encumbrance Report

## Riverside Unified School District

*Encumbrances, Expenses and Current Liabilities*

VENDOR	ENCUMBRANCE	EXPENDITURE	BALANCE	DESCRIPTION
DLR Group, Inc.	\$111,107.00	(\$1,852.50)	\$109,254.50	Architect Fees
Kelsoe & Associates, Inc.	\$10,700.00	(\$3,750.00)	\$6,950.00	Site Survey
New Vendor	\$0.00	\$0.00	\$0.00	
	\$122,557.00	(\$6,352.50)	\$116,204.50	Project Totals for 144-9776 - Mt. View Elementary School - Modernization

### 146-9776 - Pachappa Elementary School - Modernization

Chicago Title Company	\$750.00	(\$750.00)	\$0.00	Title Fees
Kelsoe & Associates, Inc.	\$10,700.00	(\$7,500.00)	\$3,200.00	Site Survey
LPA Architects	\$117,384.00	\$0.00	\$117,384.00	Architect Fees
New Vendor	\$0.00	\$0.00	\$0.00	
	\$128,834.00	(\$8,250.00)	\$120,584.00	Project Totals for 146-9776 - Pachappa Elementary School - Modernization

### 150-9776 - Taft Elementary - Modernization

Chicago Title Company	\$750.00	(\$750.00)	\$0.00	Title Fees
HMC Architects	\$92,572.00	(\$20,643.06)	\$71,928.94	Architect Fees
Hunsaker & Associates Irvine, Inc.	\$10,500.00	(\$10,500.00)	\$0.00	Site Survey
	\$103,822.00	(\$31,893.06)	\$71,928.94	Project Totals for 150-9776 - Taft Elementary - Modernization

### 154-9776 - Washington Elementary School - Modernization

Chicago Title Company	\$750.00	(\$750.00)	\$0.00	Title Fees
Hunsaker & Associates Irvine, Inc.	\$10,500.00	(\$8,454.00)	\$2,046.00	Site Survey
WLC Architects, Inc.	\$12,689.85	(\$12,689.85)	(\$0.00)	Architect Fees
	\$23,939.85	(\$21,893.85)	\$2,046.00	Project Totals for 154-9776 - Washington Elementary School - Modernization

### 156-9776 - Woodcrest Elementary School - Modernization

Chicago Title Company	\$750.00	(\$750.00)	\$0.00	Title Fees
Epic Engineers	\$11,600.00	(\$11,600.00)	\$0.00	Engineering Costs
Go Architects, Inc.	\$36,517.00	(\$7,820.63)	\$28,696.37	Architects Fees
	\$48,867.00	(\$20,170.63)	\$28,696.37	Project Totals for 156-9776 - Woodcrest Elementary School - Modernization

### 230-9776 - Earjart Middle School - Modernization

Chicago Title Company	\$750.00	(\$750.00)	\$0.00	Title Fees
Epic Engineers	\$11,600.00	(\$11,600.00)	\$0.00	Engineering Costs
Ruhnau Ruhnau Clarke & Associates	\$135,982.00	\$0.00	\$135,982.00	Architect Fees
	\$148,332.00	(\$12,350.00)	\$135,982.00	Project Totals for 230-9776 - Earjart Middle School - Modernization

### 250-9776 - Sierra Middle - Modernization

Chicago Title Company	\$750.00	(\$750.00)	\$0.00	Title Fees
Hunsaker & Associates Irvine, Inc.	\$12,500.00	(\$12,500.00)	\$0.00	Site Survey
Tbp/Architecture, Inc.	\$624,420.00	(\$35,250.00)	\$589,170.00	Architect Fees



# Encumbrance Report

## Riverside Unified School District

*Encumbrances, Expenses and Current Liabilities*

VENDOR	ENCUMBRANCE	EXPENDITURE	BALANCE	DESCRIPTION
	\$637,670.00	(\$48,500.00)	\$589,170.00	Project Totals for 250-9776 - Sierra Middle - Modernization

### 260-9772 - Woodcrest Elementary School - New Construction

Chicago Title Company	\$0.00	\$0.00	\$0.00	Title Fees
Epic Engineers	\$0.00	\$0.00	\$0.00	Engineering Costs
	\$0.00	\$0.00	\$0.00	Project Totals for 260-9772 - Woodcrest Elementary School - New Construction

### 260-9776 - Woodcrest Elementary School - Modernization

Chicago Title Company	\$750.00	(\$750.00)	\$0.00	Title Fees
Epic Engineers	\$11,600.00	(\$11,600.00)	\$0.00	Engineering Costs
Go Architects, Inc.	\$289,997.00	(\$43,076.50)	\$246,920.50	Architects Fees
Util-Locate, Inc	\$8,875.00	\$0.00	\$8,875.00	Other Construction Costs
	\$311,222.00	(\$55,426.50)	\$255,795.50	Project Totals for 260-9776 - Woodcrest Elementary School - Modernization

### 310-9772 - Arlington High School - New Construction

Kelsoe & Associates, Inc.	\$27,500.00	\$0.00	\$27,500.00	Site Survey
	\$27,500.00	\$0.00	\$27,500.00	Project Totals for 310-9772 - Arlington High School - New Construction

### 310-9776 - Arlington High School - Modernization

Chicago Title Company	\$1,025.00	\$0.00	\$1,025.00	Title Fees
	\$1,025.00	\$0.00	\$1,025.00	Project Totals for 310-9776 - Arlington High School - Modernization

### 320-9772 - King High School - New Construction

Chicago Title Company	\$750.00	\$0.00	\$750.00	Title Fees
Hunsaker & Associates Irvine, Inc.	\$10,600.00	(\$10,289.00)	\$311.00	Site Survey
RK Engineering Group, Inc.	\$7,950.00	(\$7,950.00)	\$0.00	Engineering
WLC Architects, Inc.	\$22,245.00	(\$22,045.00)	\$200.00	Architect Fees
	\$41,545.00	(\$40,284.00)	\$1,261.00	Project Totals for 320-9772 - King High School - New Construction

### 340-9772 - Poly High School - New Construction

Chicago Title Company	\$1,500.00	(\$750.00)	\$750.00	Title Fees
Epic Engineers	\$11,520.00	(\$11,520.00)	\$0.00	Engineering Costs
FirstCarbon Solutions	\$84,710.00	\$0.00	\$84,710.00	Energy Management
Placeworks	\$7,300.00	(\$7,145.60)	\$154.40	Site Costs
Riverside Unified School District	\$196.80	(\$196.80)	\$0.00	Project Planning
WLC Architects, Inc.	\$612,185.00	\$0.00	\$612,185.00	Architect Fees
	\$717,411.80	(\$19,612.40)	\$697,799.40	Project Totals for 340-9772 - Poly High School - New Construction

### 340-9776 - Poly High School - Modernization

Util-Locate, Inc	\$750.00	\$0.00	\$750.00	Other Construction Costs
------------------	----------	--------	----------	--------------------------

# Encumbrance Report

## Riverside Unified School District

*Encumbrances, Expenses and Current Liabilities*

VENDOR	ENCUMBRANCE	EXPENDITURE	BALANCE	DESCRIPTION
WLC Architects, Inc.	\$511,702.00	(\$79,286.40)	\$432,415.60	Architect Fees
	\$512,452.00	(\$79,286.40)	\$433,165.60	Project Totals for 340-9776 - Poly High School - Modernization

### 350-9776 - Ramona High School - Modernization

Chicago Title Company	\$750.00	(\$750.00)	\$0.00	Title Fees
Kelsoe & Associates, Inc.	\$15,500.00	(\$13,700.00)	\$1,800.00	Site Survey
LPA Architects	\$299,167.00	\$0.00	\$299,167.00	Architect Fees
New Vendor	\$0.00	\$0.00	\$0.00	
	\$315,417.00	(\$14,450.00)	\$300,967.00	Project Totals for 350-9776 - Ramona High School - Modernization

### 360-9772 - STEM High School - New Construction

Bowie, Arneson, Wiles & Giannone	\$733.50	(\$733.50)	\$0.00	Legal Costs
Dept.Of Toxic Substances Control	\$22,547.00	(\$11,270.00)	\$11,277.00	Environmental Costs
Epic Engineers	\$12,800.00	\$0.00	\$12,800.00	Engineering Costs
Fagen Friedman & Fulfroost, Llp	\$465.00	(\$465.00)	\$0.00	Legal
Placeworks	\$58,024.00	(\$40,652.93)	\$17,371.07	Site Costs
Psomas	\$42,900.00	(\$41,410.07)	\$1,489.93	Architect Fees
Ruhnau Ruhnau Clarke & Associates	\$1,973,000.00	(\$58,740.00)	\$1,914,260.00	Architect Fees
	\$2,110,469.50	(\$153,271.50)	\$1,957,198.00	Project Totals for 360-9772 - STEM High School - New Construction

### 460-9776 - Sunshine Early Childhood Center - Modernization

Chicago Title Company	\$1,025.00	\$0.00	\$1,025.00	Title Fees
Go Architects, Inc.	\$165,077.00	(\$23,857.94)	\$141,219.06	Architects Fees
Kelsoe & Associates, Inc.	\$12,200.00	(\$5,250.00)	\$6,950.00	Site Survey
Util-Locate, Inc	\$4,350.00	\$0.00	\$4,350.00	Other Construction Costs
	\$182,652.00	(\$29,107.94)	\$153,544.06	Project Totals for 460-9776 - Sunshine Early Childhood Center - Modernization

### 612-0000 - Facilities Projects - Undistributed

Atkinson, Andelson, Loya, Ruud &	\$20,000.00	(\$10,669.34)	\$9,330.66	Legal Costs
BLX Group	\$2,150.00	\$0.00	\$2,150.00	Consultant Costs
California Financial Services	\$100,000.00	(\$55,000.00)	\$45,000.00	Project Planning & Support
David Taussig And Associates, Inc.	\$1,500.00	\$0.00	\$1,500.00	Consultant Costs
Epic Engineers	\$11,520.00	(\$11,520.00)	\$0.00	Engineering Costs
First American Title Insurance Co	\$750.00	(\$750.00)	\$0.00	Title Fees
Go Architects, Inc.	\$10,000.00	\$0.00	\$10,000.00	Architects Fees
Riverside Unified School District	\$63.62	(\$63.62)	(\$0.00)	Project Planning
R.U.S.D. - Pub	\$1,247.76	(\$1,247.76)	\$0.00	Internal Publications
	\$147,231.38	(\$79,250.72)	\$67,980.66	Project Totals for 612-0000 - Facilities Projects - Undistributed

### 612-9772 - Facilities Projects - New Construction

# Encumbrance Report

## Riverside Unified School District

*Encumbrances, Expenses and Current Liabilities*

VENDOR	ENCUMBRANCE	EXPENDITURE	BALANCE	DESCRIPTION
Atkinson, Andelson, Loya, Ruud &	\$342.44	(\$342.44)	\$0.00	Legal Costs
	\$342.44	(\$342.44)	\$0.00	Project Totals for 612-9772 - Facilities Projects - New Construction
<b>612-9776 - Facilities Projects - Modernization</b>				
Riverside Unified School District	\$172.28	(\$172.28)	\$0.00	Project Planning
	\$172.28	(\$172.28)	\$0.00	Project Totals for 612-9776 - Facilities Projects - Modernization
	\$11,890,782.25	(\$1,087,633.31)	\$10,803,148.94	District Grand Totals for Riverside Unified School District (for selected data)